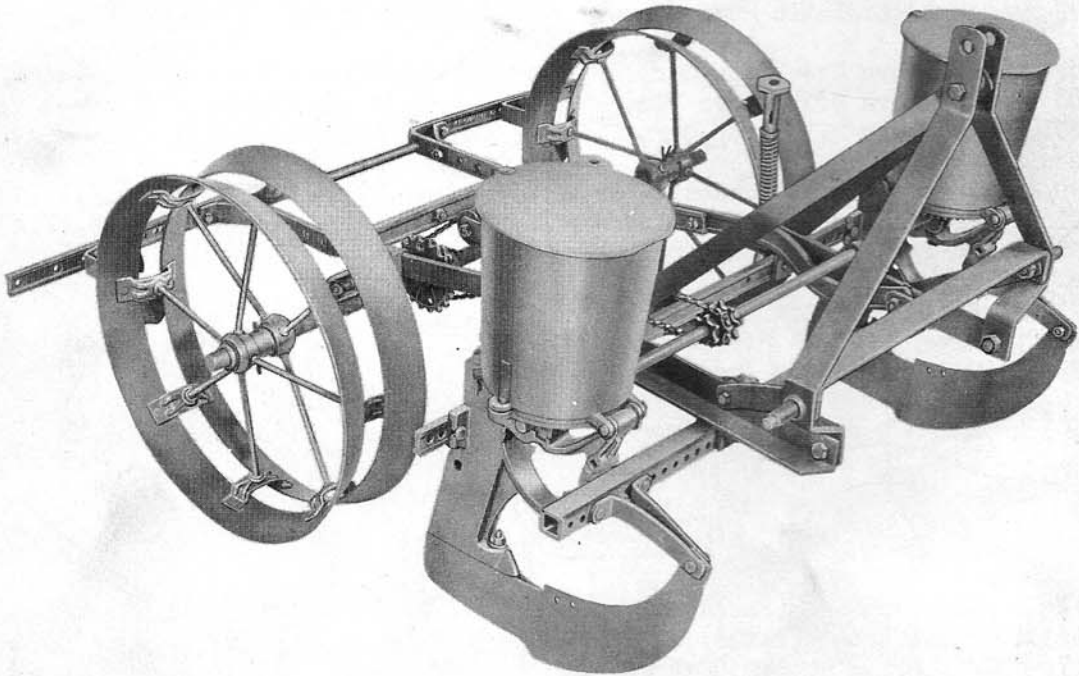


DEARBORN
PLANTERS

MODELS 12-50,-87 (CHECK ROW)
MODELS 12-62,-88 (DRILL)
MODEL 12-89 (HILL DROP)

PARTS BOOK



August, 1956

TRACTOR AND IMPLEMENT DIVISION

Ford Motor Company

2500 EAST MAPLE ROAD • BIRMINGHAM, MICHIGAN

Planter

MODEL INDEX

<u>Model No.</u>	<u>Description</u>	<u>Page No.</u>
12-50	Dearborn Corn Planter - Replaced by 12-87 . . . (1950-51)	---
12-62	Dearborn Corn Drill Planter - Replaced by 12-88(1950-51)	---
12-63	Disc Opener (1950-51)	42
12-64	Disc Coverers (1950-51)	40
12-65	Semi-Automatic Disc Markers (1950-51)	45
12-66	Gauge Wheels (1950-51)	41
12-67	Extension Hopper - Replaced by 129176 (1950-54)	21
12-69	Wheel Bands - Replaced by 12-94 (1950-51)	27
12-70	Fertilizer Attachments (For Model 12-50) . . (1950-51) Replaced by 12-90	32,37,39
12-71	Fertilizer Attachments (For Model 12-62) . . (1950-51) Replaced by 12-91	32,37,39
12-72	Semi-Automatic Hook Markers - Replaced by 12-93(1950-51)	45
12-87	Dearborn Check Row Corn Planter (1952-55)	---
12-88	Dearborn Drill Corn Planter (1952-)	---
12-89	Dearborn Hill Drop Corn Planter (1952-56)	---
12-90	Fertilizer Attachment (For Models 12-87,89) . (1952-56)	35,37,39
12-91	Fertilizer Attachment (For Model 12-88) . . . (1952-)	35,37,39
12-92	Semi-Automatic Disc Marker (1952-)	45
12-93	Semi-Automatic Hook Marker (1952-)	45
12-94	Wheel Bands - Replaced by 121563 (1953-54)	27
12-95	Gauge Shoe, 8" - Replaced by 129612 (1952-54)	18
12-101	Disc Openers - Replaced by 12-117 (1952-54)	43
12-117	Disc Openers - Replaced by 121128 (1954)	43
EXTRA EQUIPMENT		
121128	Disc Openers (Pairs) (1955-)	43
121563	Wheel Bands (Pairs) (1955-)	27
129176	Extension Hopper (Pairs) (1955-)	21
129612	Gauge Shoe (1955-)	18

Planter

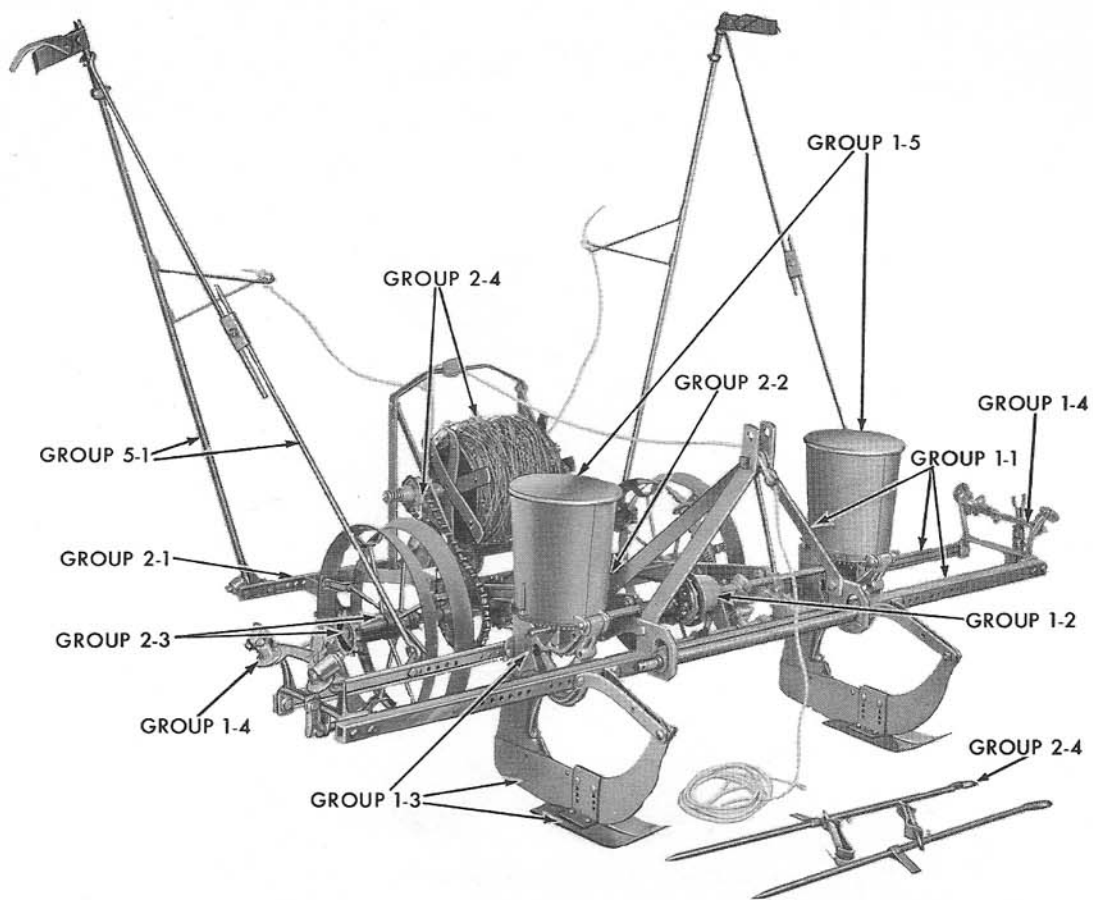


Figure 1 - Dearborn Corn Planter - Model 12-50

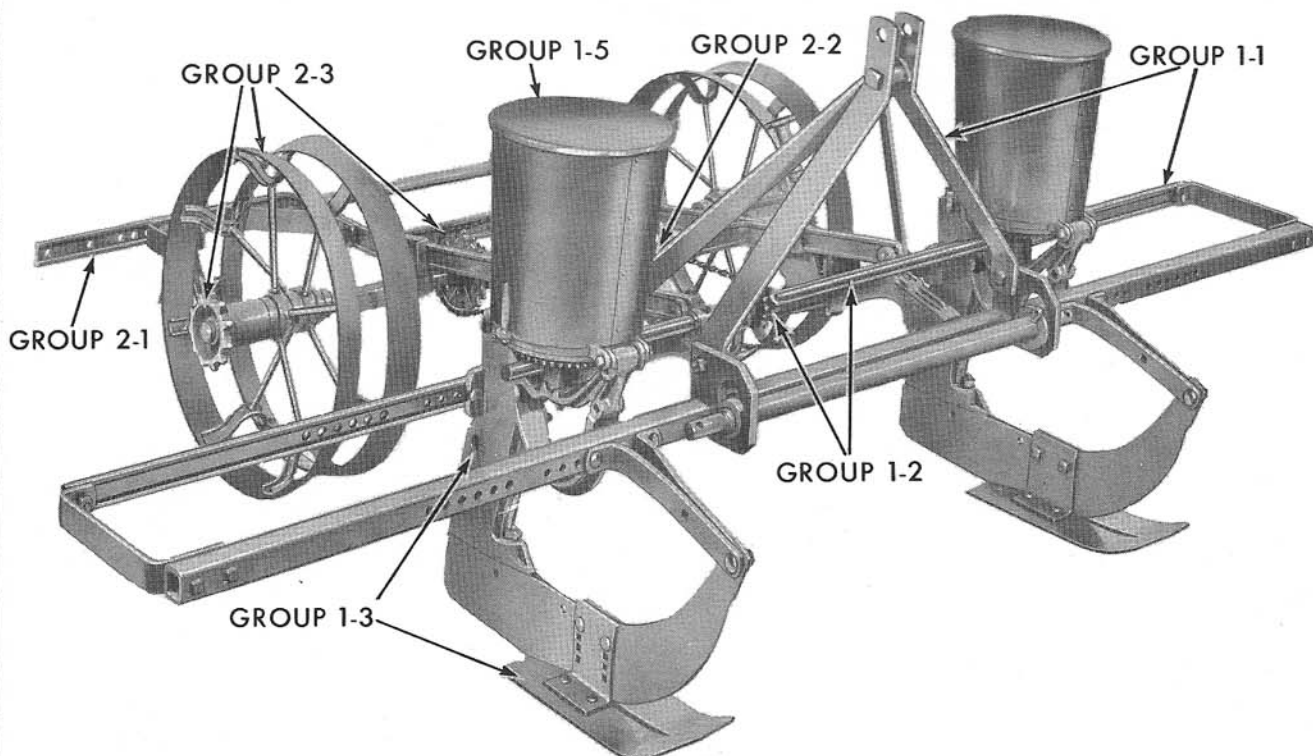


Figure 2 - Dearborn Corn Drill Planter - Model 12-62

Planter

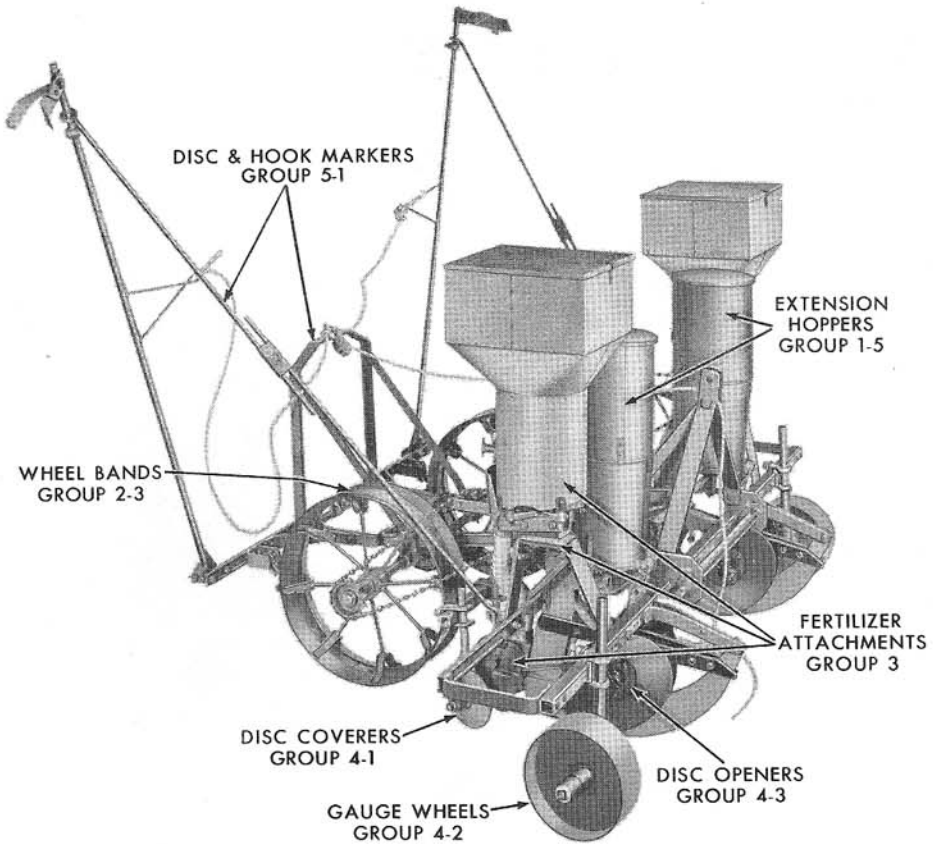


Figure 3 - Dearborn Planter Extra Equipment

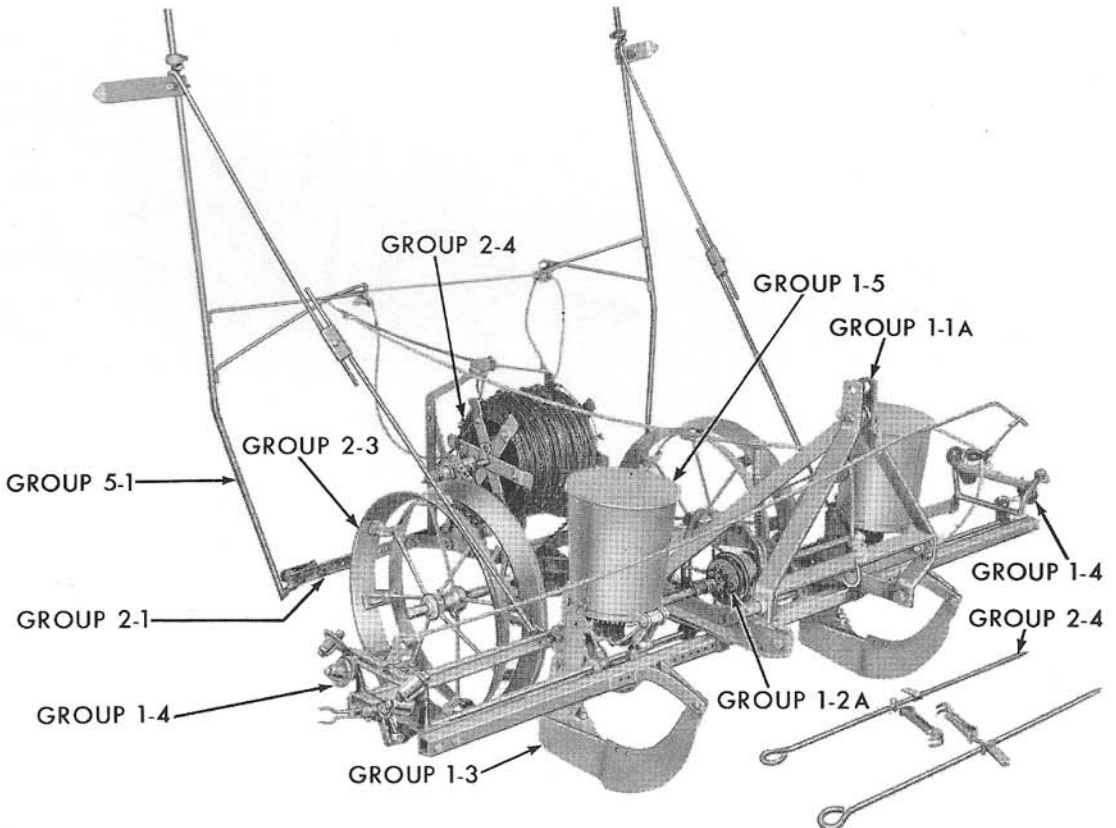


Figure 4 - Dearborn Check Row Corn Planter - Model 12-87

Planter

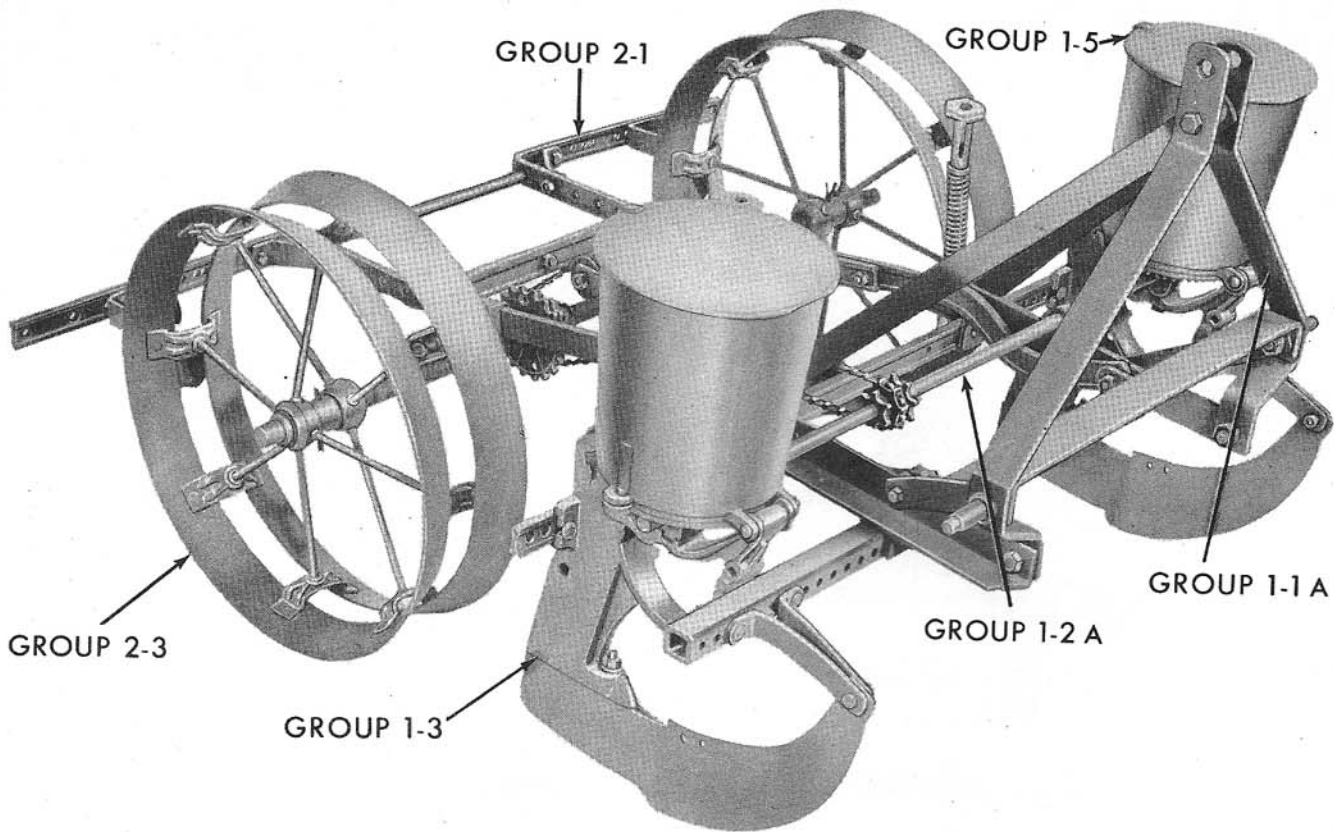


Figure 5 - Dearborn Drill Corn Planter - Model 12-88

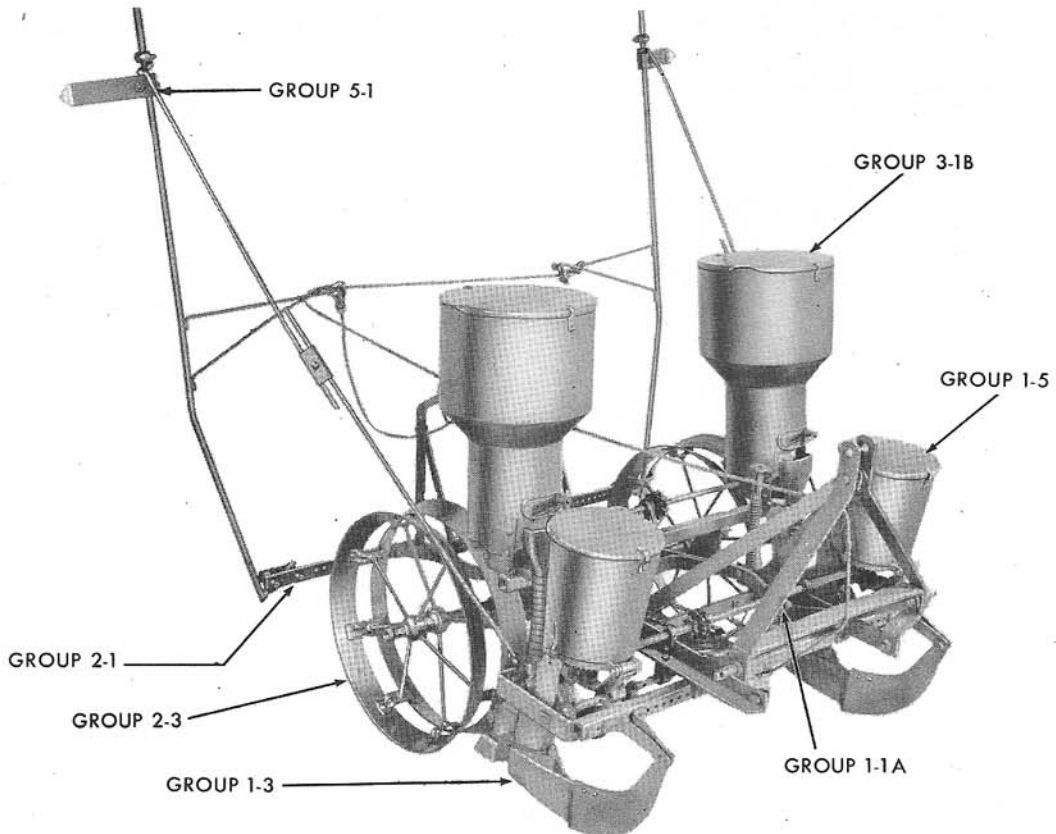


Figure 6 - Dearborn Hill Drop Corn Planter - Model 12-89; w/Extra Equipment

Planter

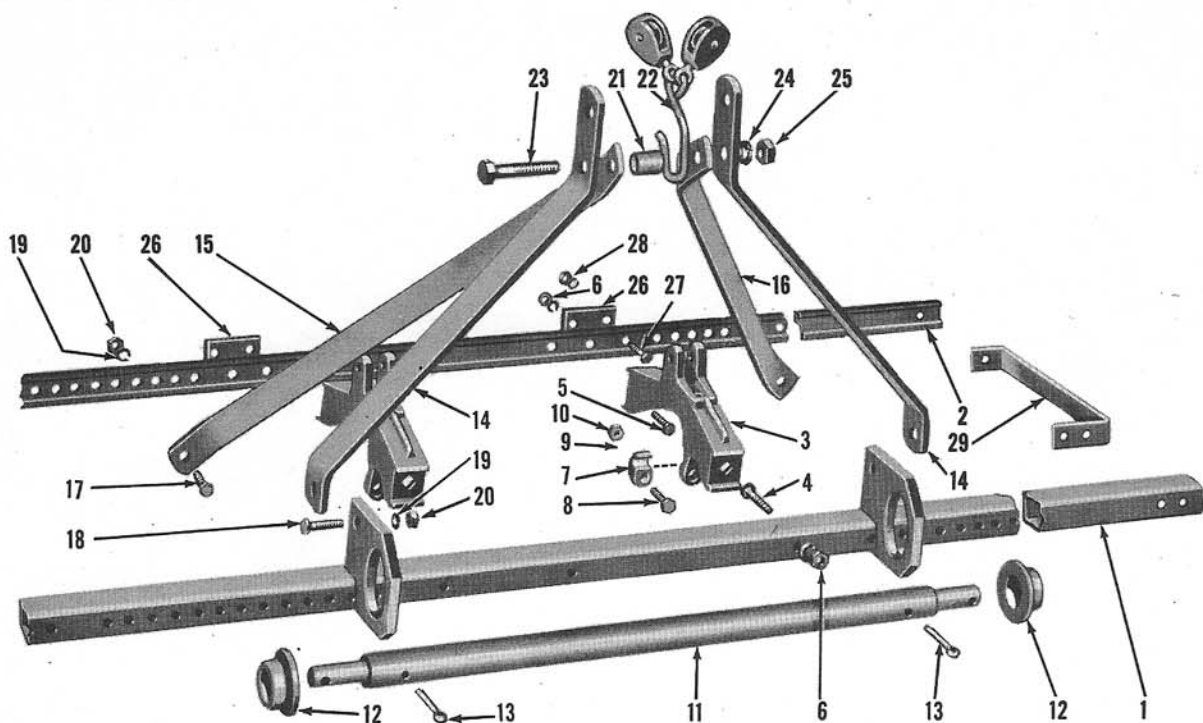


Figure 7 - Front Frame Assembly

FIG. 7	PART NO.	NAME AND DESCRIPTION	QTY. REQ.
<u>GROUP 1-1 FRONT FRAME ASSEMBLY, Models 12-50, 62</u>			
1	125554	BAR, Front (Welded Assembly)	1
2	125557	BAR, Rear	1
3	126130	HINGE, Front to Rear Bar	2
4		BOLT, 3/8 - 16 x 2-1/4 Carr - Hinge to Front Bar	2
5		BOLT, 3/8 - 16 x 1-3/4 Carr - Hinge to Rear Bar	2
6		NUT, 3/8 - 16 Hex	4
6		LOCKWASHER, 3/8	4
7	125833	CAP, Front Hinge	2
8		BOLT, 3/8 - 16 x 2 Carr)	
9		LOCKWASHER, 3/8) Cap to Shaft to Hinge	2
10		NUT, 3/8 - 16 Hex)	
11	125558	DRAWBAR	1
12	125559	ROLLER, Drawbar	2
13		COTTER PIN, 5/16 x 1-3/4 - Roller to Bar	2
14	125560	UPRIGHT, A-Frame	2
15	125561	BRACE, A-Frame, R.H.	1
16	125562	BRACE, A-Frame, L.H.	1
17		BOLT, 7/16 - 14 x 1-1/2 Hex Hd)	2
18		BOLT, 7/16 - 14 x 1-1/4 Hex Hd)	2
19		LOCKWASHER, 7/16) A-Frame	4
20		NUT, 7/16 - 14 Hex)	4

Planter

FIG.	PART NO.	NAME AND DESCRIPTION	QTY. REQ.
7		<u>GROUP 1-1 FRONT FRAME ASSEMBLY (Cont'd)</u>	
21	125817	SPACER, Pipe, 3/4 x 1-3/16	1
22	125916	HOOK ASSEMBLY Consists of Hook which is not serviced separately plus items listed below:	1
--	125919	SPRING, Check Head Safety Release	1
--	125920	CLIP, Spring	1
23		BOLT, 5/8 - 11 x 3-1/4 Hex Hd)	
24		LOCKWASHER, 5/8)	
25		NUT, 5/8 - 11 Hex)	1
		Hook and Spacer to A-Frame	
26	125708	PLATE, Stop	2
27		BOLT, 3/8 - 16 x 1-1/2 Hex Hd)	
28		LOCKWASHER, 3/8)	
28		NUT, 3/8 - 16 Hex)	2
		Plate to Rear Bar	
29	125635	BRACE, End, Frame (Used on Model 12-62 Only)	2
--		BOLT, 3/8 - 16 x 1-1/2 Hex Hd)	
--		LOCKWASHER, 3/8)	
--		NUT, 3/8 - 16 Hex)	6
		Brace to Bars	

Planter

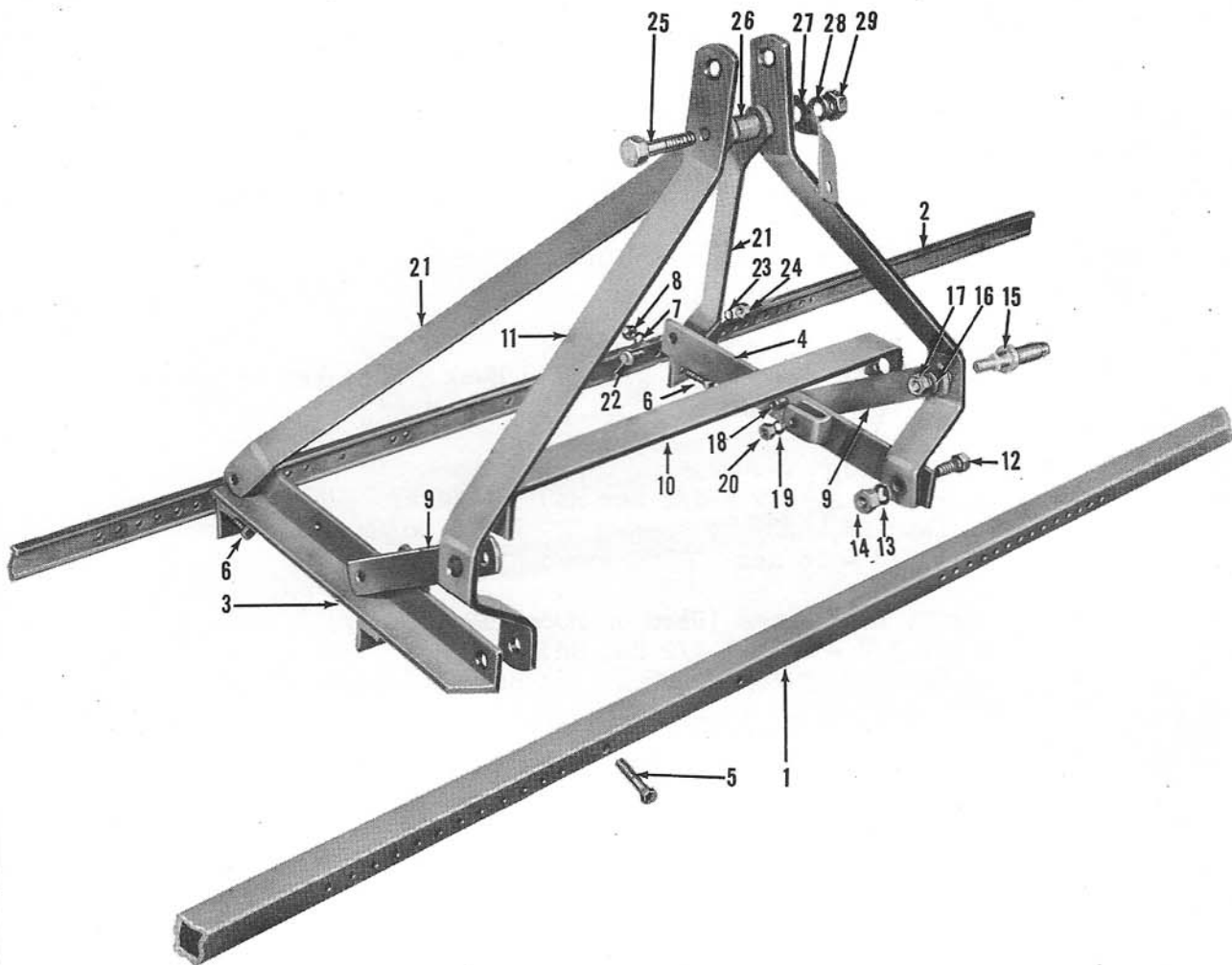


Figure 8 - Front Frame Assembly

FIG. 8	PART NO.	NAME AND DESCRIPTION	QTY. REQ.		
			12-87	12-88	12-89
<u>GROUP 1-1A FRONT FRAME ASSEMBLY, Models 12-87, 88, 89</u>					
1	128028	BAR, Front	1		
-	128027	BAR, Front		1	1
2	128025	BAR, Rear	1		
-	128026	BAR, Rear		1	1
3	127983	HITCH, Frame R. H.	1	1	1
4	127980	HITCH, Frame L. H.	1	1	1
5		BOLT, 7/16 - 1 1/4 x 2-1/4 Hex Hd - Hitch to Front Bar . .	2	2	2
6		BOLT, 7/16 - 1 1/4 x 1-3/4 Hex Hd - Hitch to Rear Bar . .	2	2	2
7		LOCKWASHER, 7/16	4	4	4
8		NUT, 7/16 - 1 1/4 Hex	4	4	4

Planter

FIG. 8	PART NO.	NAME AND DESCRIPTION	QTY. REQ.		
			12-87	12-88	12-89
		<u>GROUP 1-1A FRONT FRAME ASSEMBLY, Models 12-87, 88, 89 (Cont'd)</u>			
9	128048	BRACE, A-Frame	2	2	2
-	128085	BRACE, End, Left			1
-	127976	BRACE, End, Right			1
10	128007	SPREADER, Top Link	1	1	1
11	128024	UPRIGHT, A-Frame	2	2	2
12		BOLT, 5/8 - 11 x 1-1/2 Hex Hd)			
13		LOCKWASHER, 5/8) Upright to Hitch	2	2	2
14		NUT, 5/8 - 11 Hex)			
15	103497	PIN, Link)			
16		LOCKWASHER, 5/8) Upright thru Brace to Spreader . . .	2	2	2
17		NUT, 5/8 - 18 Hex)			
-		BOLT, 7/16 - 1 1/4 x 2-1/2 Hex Hd)			
18	128162	SPACER, 3/8 x 5/8 Pipe) Brace thru Hitch	2	2	2
19		LOCKWASHER, 7/16)			
20		NUT, 7/16 - 1 1/4 Hex)			
21	127984	STRUT, A-Frame	2	2	2
22		BOLT, 7/16 - 1 1/4 x 1-1/4 Carr)			
23		LOCKWASHER, 7/16) Strut to Hitch	2	2	2
24		NUT, 7/16 - 1 1/4 Hex)			
25		BOLT, 5/8 - 11 x 3-1/4 Hex Hd)	1	1	1
26	125817	SPACER, 3/4 x 1-3/16 Pipe) Upright thru Struts	1	1	1
27	128070	CLIP, Hook Retaining) to Upright . . .	1	1	1
28		LOCKWASHER, 5/8)	1	1	1
29		NUT, 5/8 - 11 Hex)	1	1	1

Planter

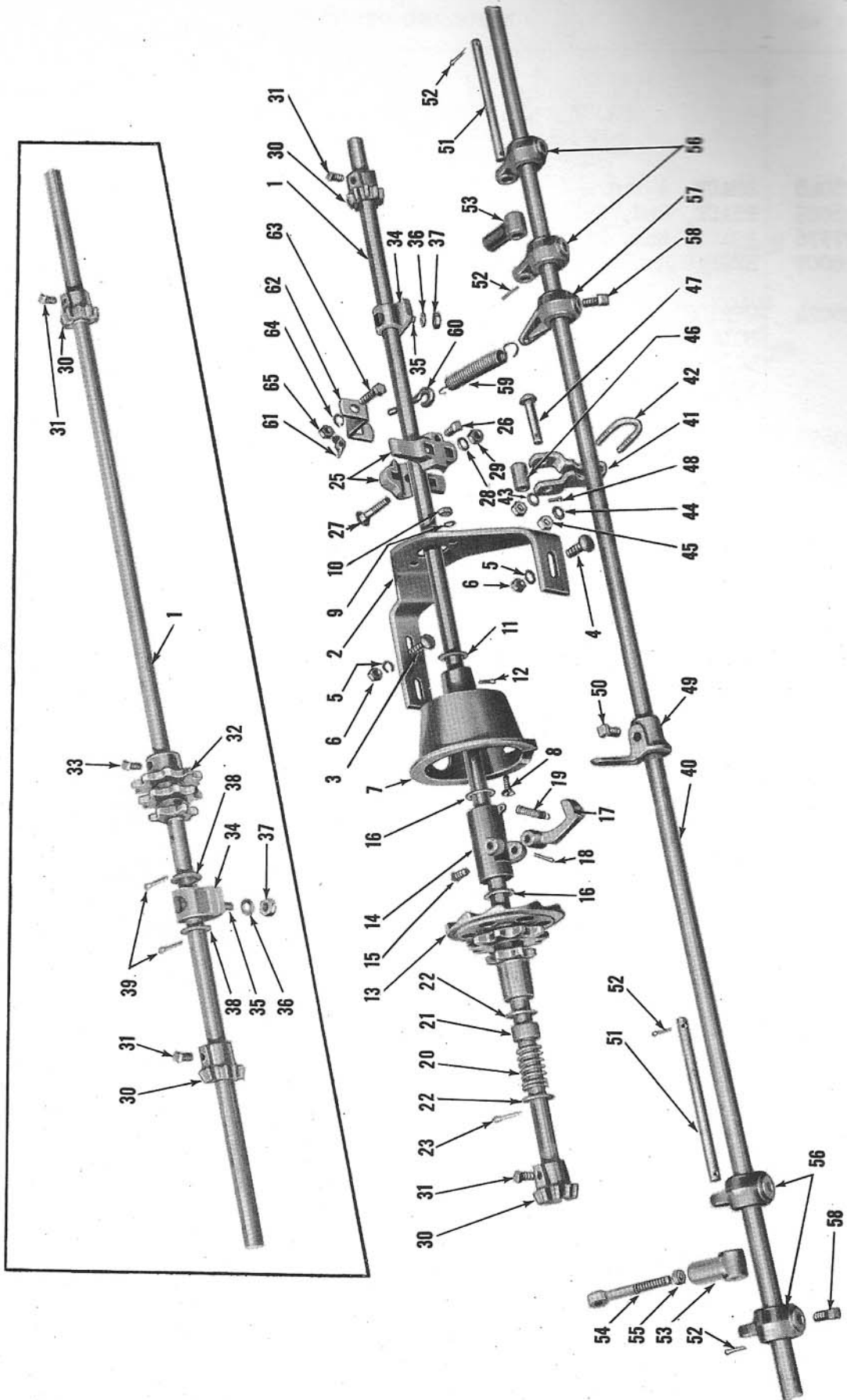


Figure 9 - Seed & Rocker Shaft Drive Parts

Planter

FIG. 9	PART NO.	NAME AND DESCRIPTION	QTY. REQ.	
		GROUP 1-2 SEED SHAFT AND ROCKER SHAFT DRIVE PARTS for Models 12-50, 62	12-50	12-62
1	125610	SHAFT, Seed	1	1
2	125616	SUPPORT, Housing	1	
3		BOLT, 3/8 - 16 x 1 Carr)	2	
4		BOLT, 3/8 - 16 x 2-1/4 Carr)	1	
5		LOCKWASHER, 3/8) Support to Bars	3	
6		NUT, 3/8 - 16 Hex)	3	
7		125611	HOUSING, Clutch	1
8	125611	BOLT, 5/8 - 18 x 7/8 Flat Hd, Sq Nk)		
9		LOCKWASHER, 5/8) Housing to	2	
10		NUT, 5/8 - 18 Hex) Support		
11	125842	WASHER, 25/32 x 1-1/4 x 1 1/4 Ga)		
12		COTTER PIN, 3/16 x 1-1/4) Housing to Shaft . . .	1	
13	125612	CLUTCH, Drive, W/Double Sprocket	1	
14	125614	HOLDER, Clutch Dog (Inside Housing)	1	
15	125842	SET SCREW, 3/8 x 5/8 Sq Hd, Cup Pt - Holder to Shaft .	2	
16		WASHER, 25/32 x 1-1/4 x 1 1/4 Ga Flat-Holder to Clutch and Housing	2	
17	125613	DOG, Clutch	1	
18	125606	COTTER PIN, 1/8 x 1 - Dog to Holder	1	
19		SPRING, Dog Return (Inside Housing)	1	
20	125615	SPRING, Clutch Tension	1	
21	125864	SPACER, Pipe, 3/4 x 9/16	1	
22		WASHER, 3/4 Flat)	2	
23		COTTER PIN, 3/16 x 1-1/4) Spring & Spacer to Shaft	1	
25	128504	ARM, Trip, Seed Shaft	2	
26		SET SCREW, 3/8 - 16 x 5/8 Sq Hd, Cup Pt)		
27		BOLT, 3/8 - 16 x 1-3/4 Carr) Arm to		
28		LOCKWASHER, 3/8) Shaft	2	
29		NUT, 3/8 - 16 Hex)		
30	129232	GEAR, Bevel	2	2
31		SET SCREW, 7/16 - 14 x 3/4 Sq Hd, Cup Pt-Gear to Shaft	2	2
32	125873	SPROCKET, Drive (Cluster Type)		1
33		SET SCREW, 7/16 - 14 x 3/4 Sq Hd, Cup Pt - Sprocket to Shaft		1
34	125637	BRACKET, Bearing	1	1
35		BOLT, 3/8 - 16 x 2 Hex Hd)		
36		LOCKWASHER, 3/8) Bracket to Hinge	1	1
37		NUT, 3/8 - 16 Hex)		
38		WASHER, 3/4 Flat)		
39	125618	COTTER PIN, 3/16 x 1-1/4) Bracket to Shaft		2
40		SHAFT, Rocker	1	

Planter

FIG. 9	PART NO.	NAME AND DESCRIPTION	QTY. REQ.	
			12-50	12-62
<u>GROUP 1-2 SEED SHAFT AND ROCKER SHAFT DRIVE PARTS for Models 12-50, 62 (Cont'd)</u>				
41	121111	BRACKET, Roller (Hill Drop)	1	
42	121112	"U" BOLT,	1	
43		WASHER, 3/8 Flat)		
44		LOCKWASHER, 3/8) Bracket and Clamp to Shaft	2	
45		NUT, 3/8 - 16 Hex)		
46	128302	SPACER, Pipe, 3/8 x 1-1/16	1	
47		RIVET, 7/16 x 2 Rd Hd, Drld)		
48		COTTER PIN, 1/8 x 1) Spacer to Bracket	1	
49	125619	ARM, Trip, Rocker Shaft	1	
50		SET SCREW, 7/16 - 1/4 x 3/4 Sq Hd, Cup Pt Trip to Shaft	1	
51	125564	ROD, Valve	2	
52		COTTER PIN, 1/8 x 1 Rod to Arms	4	
53	125579	SOCKET, Stud	2	
54	125580	STUD, Valve	2	
55		NUT, 7/16 - 1/4 Hex - Stud to Socket	2	
56	125620	ARM, Rocker Shaft	4	
57	128204	ARM, Rocker Shaft (At Spring)	1	
58		SET SCREW, 7/16 - 1/4 x 3/4 Sq Hd, Cup Pt Arm to Shaft	5	
59	125836	SPRING, Arm Return	1	
60	125835	EYEBOLT, 1/4 - 20 x 2-5/8	1	
61		NUT, 1/4 - 20 Wing - Eyebolt to Clip	1	
62	125837	CLIP, Spring	1	
63		BOLT, 3/8 - 16 x 1-1/4 Hex Hd)		
64		LOCKWASHER, 3/8) Clip to Rear Bar	1	
65		NUT, 3/8 - 16 Hex)		

Planter

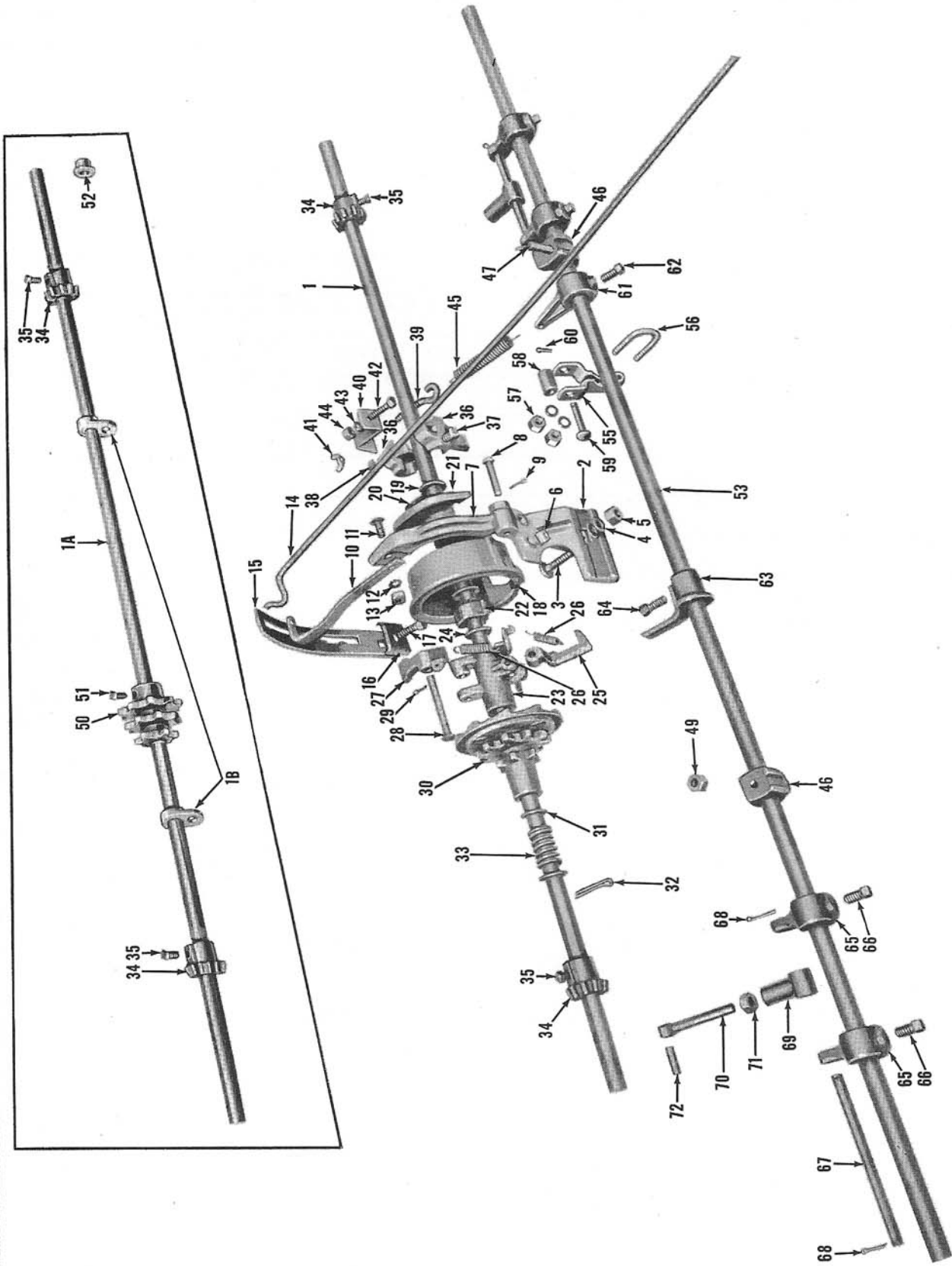


Figure 10 - Seed & Rocker Shaft Drive Parts

Planter

FIG. 10	PART NO.	NAME AND DESCRIPTION	QTY. REQ.		
			12-87	12-88	12-89
<u>GROUP 1-2A SEED SHAFT AND ROCKER SHAFT DRIVE PARTS</u>					
1	128073	SHAFT, Seed	1		
1A	128056	SHAFT, Seed		1	1
1B	128166	BEARING, Seed Shaft		2	2
-		BOLT, 7/16 - 1 1/4 x 1-1/4 Carr)			
-		LOCKWASHER, 7/16) Bearing to Hitch Assy. .		2	2
-		NUT, 7/16 - 1 1/4 Hex)			
-	125842	WASHER, 25/32 ID x 1-1/4 OD x .07 Flat - Shaft		2	2
2	128089	SUPPORT, Housing	1		
3		BOLT, 7/16 - 1 1/4 x 2-3/8 Carr)			
4		LOCKWASHER, 7/16) Support to Front Bar . .	1		
5		NUT, 7/16 - 1 1/4 Hex)			
-		BOLT, 5/16 - 18 x 1 Plow)			
-		LOCKWASHER, 5/16) Support to Housing	2		
6		NUT, 5/16 - 18 Hex)			
7	128090	CAM, Clutch	1		
8		PIN, 5/16 x 1-3/4 - Rivet)			
9		COTTER PIN, 1/8 x 1) Cam to Support	1		
10	128081	LEVER, Clutch Cam Extension	1		
11		BOLT, 5/16 - 18 x 7/8 Carr)			
12		LOCKWASHER, 5/16) Lever to Cam	1		
13		NUT, 5/16 - 18 Square)			
14	128069	LEVER, Clutch Shifting	1		
15	128074	QUADRANT, Clutch	1		
16	128065	RETAINER, Quadrant	1		
17		BOLT, 3/8 - 16 x 1-3/8 Hex Hd)			
--		LOCKWASHER, 3/8) Retainer thru Quadrant	1		
--		NUT, 3/8 - 16 Hex) to Rear Bar			
18	128505	HOUSING, Clutch	1		
19	125842	WASHER, 25/32 ID Flat)			
20		COTTER PIN, 3/16 x 1-1/4) Housing to Shaft	1		
--	125963	WASHER, Clutch Shim	As	Req.	
21	128050	COVER, Dust			
--		BOLT, 1/4 - 20 x 3/4 Stove)			
--		NUT, 1/4 - 20 Square) Cover to Housing	1		
22	128051	RATCHET, Clutch	1		
--		PIN, 3/16 x 1-1/8 Str Plain)			
--		PIN, 1/4 x 1-1/8 Str Plain) Ratchet Retaining	1		
23	128082	HOLDER, Clutch Dog and Pawl	1		
24	125842	WASHER, 25/32 ID Flat - Holder to Clutch and Housing .	2		
25	125613	DOG, Clutch	1		
--	128075	PIN, 5/16 x 2-1/8 Str Drld - Dog to Holder	1		
26	125606	SPRING, Dog and Pawl	2		
27	128053	PAWL, Clutch	1		
28	128071	PIN, 3/8 x 3 Tension, Drld)	1		
29		COTTER PIN, 1/8 x 1) Clutch Pawl	2		

Planter

FIG. 10	PART NO.	NAME AND DESCRIPTION	QTY. REQ.		
			12-87	12-88	12-89
<u>GROUP 1-2A SEED SHAFT AND ROCKER SHAFT DRIVE PARTS</u> (Cont'd)					
30	121117	CLUTCH, Drive w/Double Sprocket	1		
31	125842	WASHER, 3/4 Flat	3		
32		COTTER PIN, 3/16 x 1-1/4 - Clutch Retaining	2		
33	125615	SPRING, Clutch Tension	1		
34	129232	GEAR, Bevel	2	2	2
35		SET SCREW, 3/8 - 16 x 5/8 Sq Hd - Gear to Shaft	2	2	2
36	128504	ARM, Trip			2
--	121118	CAM, Hill Drop	2		
37		SET SCREW, 3/8 - 16 x 5/8 Sq Hd Cup Pt)			
38		BOLT, 3/8 - 16 x 1-3/4 Carr)			
--		LOCKWASHER, 3/8) Arm to Shaft	2		2
--		NUT, 3/8 - 16 Hex)			
39	125835	EYEBOLT, 5/16 - 18 x 2-5/8	1		1
40	125837	CLIP, Spring	1		1
41		NUT, 5/16 - 18 Wing - Eye-Bolt to Clip	1		1
42		BOLT, 3/8 - 16 x 1-1/4 Hex Hd)			
43		LOCKWASHER, 3/8) Clip to Rear Bar	1		1
44		NUT, 3/8 - 16 Hex)			
45	125836	SPRING, Arm Return	1		1
46	128164	BRACKET, Bearing	2		2
47		BOLT, 7/16 - 14 x 1 Hex)			
49		NUT, 7/16 - 14 Sq) Bracket to Frame	2		2
50	125873	SPROCKET, Drive (Cluster Type)		1	1
51		SET SCREW, 3/8 - 16 x 3/4 - Sprocket to Shaft		1	1
52	127977	BEARING, Check Shaft			2
53	125618	SHAFT, Check	1		
--	128088	SHAFT, Hill Drop			1
--		COTTER PIN, 3/16 x 1-1/4 - Hill Drop Shaft			2
55	121111	BRACKET, Roller (Hill Drop)	1		1
56	121112	"U" BOLT	1		1
--		WASHER, 3/8 Flat)			
--		LOCKWASHER, 3/8) U-Bolt to Bracket	2		2
57		NUT, 3/8 - 16 Hex)			
58	128302	SPACER, Pipe, 3/8 x 1-1/16	1		1
59	125844	PIN, 7/16 x 2, Drilled	1		1
60		COTTER PIN, 1/8 x 1 - Pin Retaining	1		1
61	128204	ARM, Clutch Trip Tension	1		
62		SET SCREW, 7/16 - 14 x 3/4 Sq Hd, Cup Pt - Arm to Shaft	1		

Planter

FIG. 10	PART NO.	NAME AND DESCRIPTION	QTY. REQ.	
		GROUP 1-2A SEED SHAFT AND ROCKER SHAFT DRIVE PARTS (Cont'd)	12-87	12-89
63	125619	ARM, Trip	1	
64		SET SCREW, 7/16 - 1 1/4 x 3/4 Sq Hd, Cup Pt - Arm to Shaft	1	
65	125620	ARM, Rocker Shaft)	4	4
66		SET SCREW, 7/16 - 1 1/4 x 3/4 Sq Hd Cup Pt) Arm to Shaft	4	4
67	125564	ROD, Valve, Seed Boot	2	2
68		COTTER PIN, 1/8 x 1 - Arm to Valve Stud	4	4
69	125579	SOCKET, Connecting Rod	2	2
70	125580	STUD, Valve	2	2
71		NUT, 7/16 - 1 1/4 Hex - Stud to Socket	2	2
72	125591	PIN, Valve - Stud to Long Valve Assembly	2	2

Planter

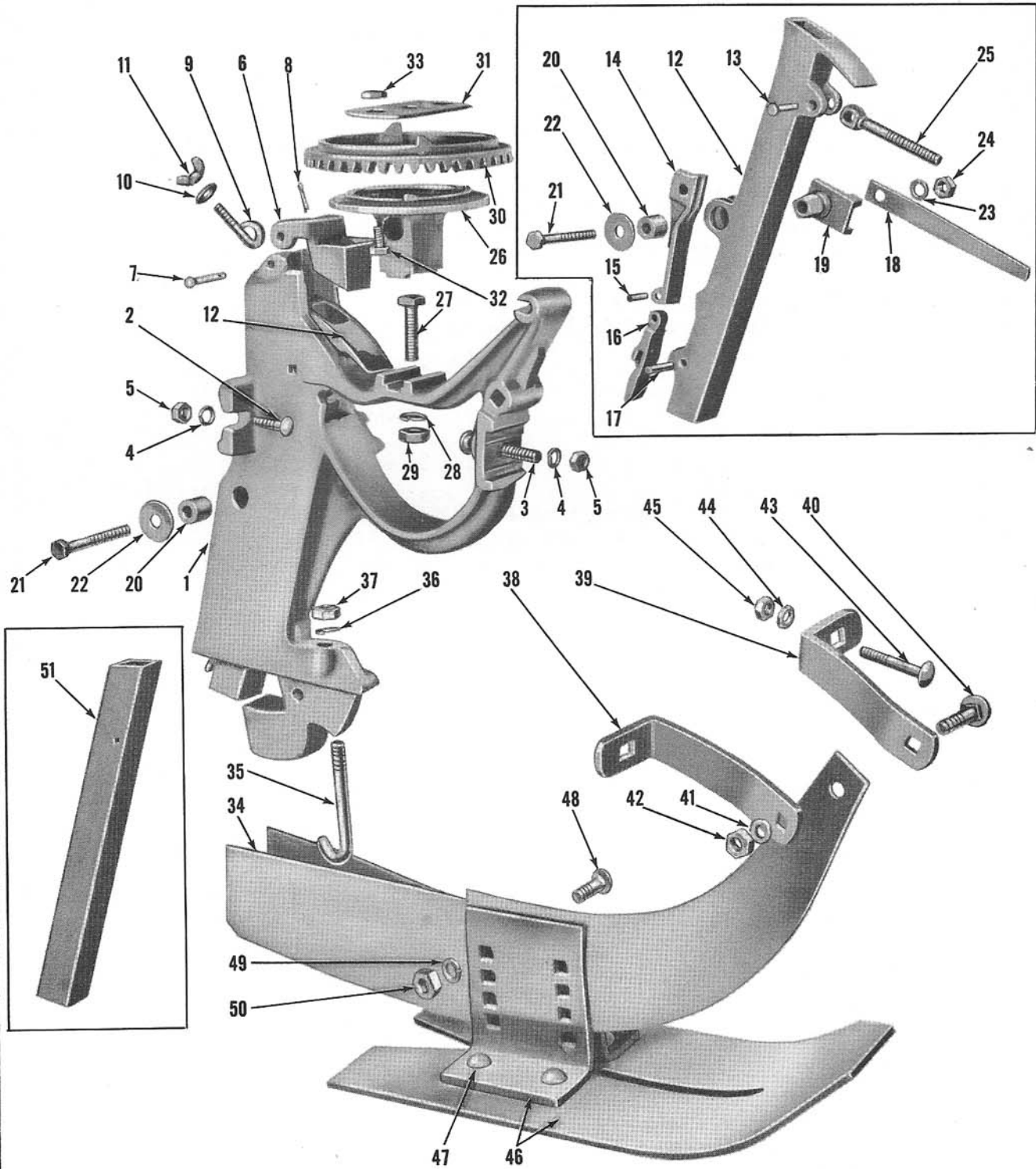


Figure 11 - Shank & Runner Opener Assembly

Planter

FIG. 11	PART NO.	NAME AND DESCRIPTION	QTY. REQ.		
			12-50 12-87	12-62 12-88	12-89
		<u>GROUP 1-3 SHANK AND RUNNER OPENER ASSEMBLY FOR CORN PLANTERS</u>			
1	128083	SHANK, Runner Opener	2	2	2
2		BOLT, 3/8 - 16 x 1-1/4 Carr)	4	4	4
3		BOLT, 3/8 - 16 x 2-3/4 Carr)	2	2	2
4		LOCKWASHER, 3/8)	6	6	6
5		NUT, 3/8 - 16 Hex)	6	6	6
6	125582	SPOUT, Hopper Shank	2		
7	125852	RIVET, 5/16 x 2-1/2 Drilled	2		2
8		COTTER PIN, 1/8 x 3/4 - Spout & Eyebolt to Shank	2		2
9	128671	EYEBOLT, 5/16 - 18)			
10		WASHER, 5/16 Flat) Hopper Lock	2	2	2
11		NUT, 5/16 - 18 Wing)			
12	125576	VALVE, Long (Inside Shank)	2		2
13	125591	PIN, Valve - Long Valve to Stud	2		2
14	125574	VALVE, Intermediate (Inside Shank, Middle) . .	2		2
15	125575	PIN, Valve, 1/4 x 15/16 - Intermediate Valve to Lower Valve	2		2
16	125573	VALVE, Lower (Inside Shank)	2		2
17	125577	PIN, Valve, 1/4 x 1-5/16 - Lower Valve to Long Valve	2		2
18	125592	STRAP, Lock, Valve	2		2
19	125586	ARBOR, Lock Strap (Holds Lock Strap to Shank) .	2		2
20	125587	THIMBLE	2		2
21		BOLT, 3/8 - 16 x 2-3/4 Hex Hd) Long Valve,			
22	125841	WASHER, 7/16 Flat) Thimble, Arbor			
23		LOCKWASHER, 3/8) & Strap to Shank	2		2
24		NUT, 3/8 - 16 Hex)			
25	125580	STUD, Valve, 7/16 - 14	2		2
26	128491	SUPPORT, Ring Gear	2	2	2
27		BOLT, 7/16 - 14 x 1-3/4 Hex Hd)			
28		LOCKWASHER, 7/16)Support to Shank	2	2	2
29		NUT, 7/16 - 14 Hex)			
30	128680	GEAR, Ring	2	2	2
31	128688	PLATE, Retainer, Ring Gear	2	2	2
32		BOLT, 5/16 x 5/8 Hex Hd)			
33		NUT, 5/16 - 18 Hex) Clamp to Gear to Support	4	4	4
34	128022	OPENER, Runner (WA) Use 128022 in pairs & replace Braces	2	2	2
35	125589	BOLT, 7/16 - 14 Hook)			
36		LOCKWASHER, 7/16) Opener to Shank	2	2	2
37		NUT, 7/16 - 14 Hex)			
38	125565	BRACE, Opener Support R. Replace w/128031, 12-50, 62	2	2	2
39	125566	BRACE, Opener Support L. Replace w/128003, 12-50, 62			
40		BOLT, 3/8 - 16 x 2 Carr)			
41		LOCKWASHER, 3/8) Braces to Opener . . .	2	2	2
42		NUT, 3/8 - 16 Hex)			
43		BOLT, 3/8 - 16 x 2-1/4 Carr)			
44		LOCKWASHER, 3/8) Braces to Front Bar	4	4	4
45	129612	NUT, 3/8 - 16 Hex)			

Planter

FIG. 11	PART NO.	NAME AND DESCRIPTION	QTY. REQ.		
		GROUP 1-3 SHANK AND RUNNER OPENER ASSEMBLY FOR CORN PLANTERS (Cont'd)	12-50	12-62	
			12-87	12-88	12-89
46	129612	SHOE ASSEMBLY, Gauge Consists of Shoe with Clamps of which the Clamps are not serviced separately plus items listed below:	2	2	2
--	129214	SHOE, Gauge	2	2	2
47		RIVET, 3/8 x 5/8 Rd Hd - Clamps to Shoe .	8	8	8
48		BOLT, 3/8 - 16 x 1-1/4 Carr) Clamps to Opener .	4	4	4
49		LOCKWASHER, 3/8)			
50		NUT, 3/8 - 16 Hex)			
51	125695	SPOUT, Hopper Shank (Inside Shank)		2	
--	128031	BRACE, Opener Support, Right	2	2	2
--	128003	BRACE, Opener Support, Left	2	2	2

Group 1-4—CHECK HEAD ASSEMBLY

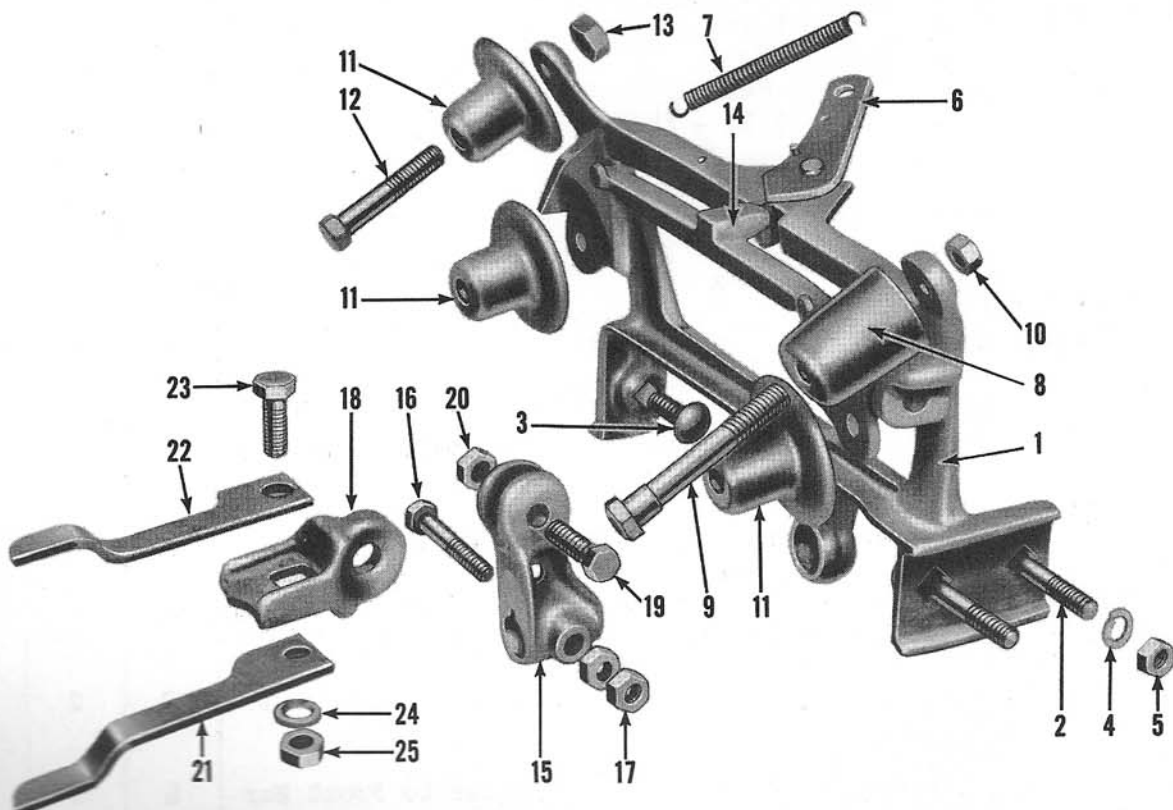


Figure 12 - Check Head Assembly

Planter

FIG. 12	PART NO.	NAME AND DESCRIPTION	QTY. REQ.
GROUP 1-4 CHECK HEAD ASSEMBLY (Used on Model 12-50 & 12-87 only)			
1	128093	HEAD, Check, Right	1
-	128094	HEAD, Check, Left	1
2		BOLT, 3/8 - 16 x 2-3/4 Carr)	4
3		BOLT, 3/8 - 16 x 1-1/2 Carr)	2
4		LOCKWASHER, 3/8) Head to Front and Rear Bars	6
5		NUT, 3/8 - 16)	6
6	128199	LATCH, Wire Dump, w/Pin	2
-		PIN, 3/16 x 5/8 Roll - Latch to Check Head (12-50 only) . .	2
7	125606	SPRING, Wire Dump Latch	2
-	128091	SPRING, Wire Dump Latch (12-87 only)	2
8	125603	ROLLER, Wire	2
9		BOLT, 7/16 - 1 1/4 x 2-3/4 Hex Hd)	
-		LOCKWASHER, 7/16) Roller to Check Head . . .	2
10		NUT, 7/16 - 1 1/4 Hex)	
11	125602	ROLLER, Wire	6
12		BOLT, 7/16 - 1 1/4 x 2-1/2 Hex Hd)	
--		LOCKWASHER, 7/16) Rollers to Check Head	6
13		NUT, 7/16 - 1 1/4 Hex) and Wire Dump	
14	125601	DUMP, Wire	2
15	125596	HINGE, Fork	2
16		BOLT, 3/8 - 16 x 2 Hex Hd)	2
17		NUT, 3/8 - 16 Hex) Hinge to Shaft	4
18	125597	ARM, Fork	2
19		BOLT, 3/8 - 16 x 1-1/4 Hex Hd)	
--		LOCKWASHER, 3/8) Arm to Hinge	2
20		NUT, 3/8 - 16 Hex)	
21	125594	FORK, Wire, Right	2
22	125595	FORK, Wire, Left	2
23		BOLT, 3/8 - 16 x 1 Hex Hd)	
24		LOCKWASHER, 3/8) Forks to Arm	2
25		NUT, 3/8 - 16 Hex)	

Planter

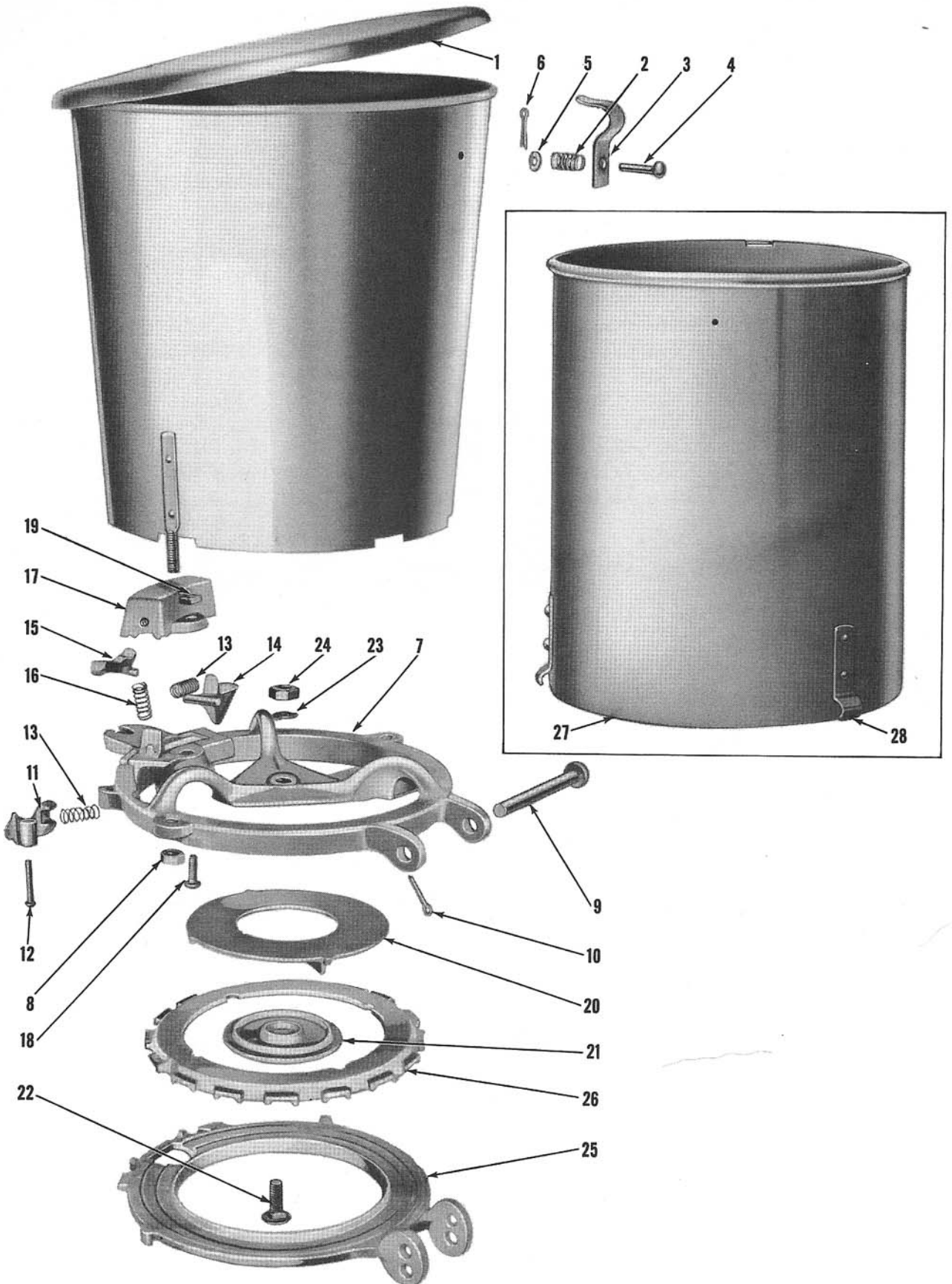


Figure 13 - Seed Hopper Assembly

Planter

FIG. 13	PART NO.	NAME AND DESCRIPTION	QTY. REQ.
<u>GROUP 1-5 SEED HOPPER ASSEMBLY, FOR CORN PLANTERS</u>			
-	125934	HOPPER AND COVER ASSEMBLY, Seed Consists of Hopper which is not serviced separately plus items listed below:	2
1	125716	COVER, Hopper	2
-	125718	HINGE, Hopper Cover	2
2	125717	SPRING, Latch	2
3	125714	LATCH, Cover	2
4	125713	RIVET, 1/4 x 1 Rd Hd Drld)	
5		WASHER, 1/4 Flat) Spring and Latch to Hopper	2
6		COTTER PIN, 1/8 x 5/8)	
7	125965	BOTTOM, Hopper	2
8		NUT, 5/16 - 18 Hex - Bottom to Hopper	4
9	125855	RIVET, 3/8 x 3-1/2 Rd Hd)	
10		COTTER PIN, 1/8 x 3/4) Bottom and Ring to Shank Hinge .	2
11	125726	LATCH, Hopper Bottom	2
12		RIVET, 3/16 x 1-1/4 Rd Hd - Latch to Bottom	2
13	125727	SPRING, Latch and Knocker	4
14	125725	KNOCKER, Valve	2
15	125722	CUT-OFF, Seed	2
16	125728	SPRING, Cut-Off	2
17	128692	CAP, Knocker and Cut-Off (Inside Hopper)	2
18		SCREW, 1/4-20 x 3/4 Rd.Hd.) Cap to Hopper Bottom	2
19		NUT, 1/4-20 Hex)	
20	125724	DISC, Hopper Bottom	2
21	125723	WASHER, Disc	2
22		BOLT, 3/8 - 16 x 1 Carr)	
23		LOCKWASHER, 3/8) Washer and Disc Bottom	2
24		NUT, 3/8 - 16 Hex)	
25	125729	RING, Reversible	2
26	126063	PLATE, Seed, Variable, See Seed Plate Reference List	2
--		SCREW, 10 - 24 x 5/8 Rd. Hd.) Knocker Cap	2
--		NUT, #10 - 24 Hex)	
<u>EXTRA EQUIPMENT</u>			
27	129176	HOPPER ASSEMBLY, Extension Consists of Hopper which is not serviced separately plus items listed below:	2
28	126028	CLAMP, Hopper	6
--		BOLT, 3/16 - 24 x 3/8 Stove)	
--		LOCKWASHER, 3/16) Clamps to Hopper	12
--		NUT, 3/16 - 24 Hex)	
--		BOLT, 1/8 - 40 x 3/8 Stove)	
--		LOCKWASHER, 1/8) To Replace Cover Hinge Rivets	6
--		NUT, 1/8 - 40 Hex)	

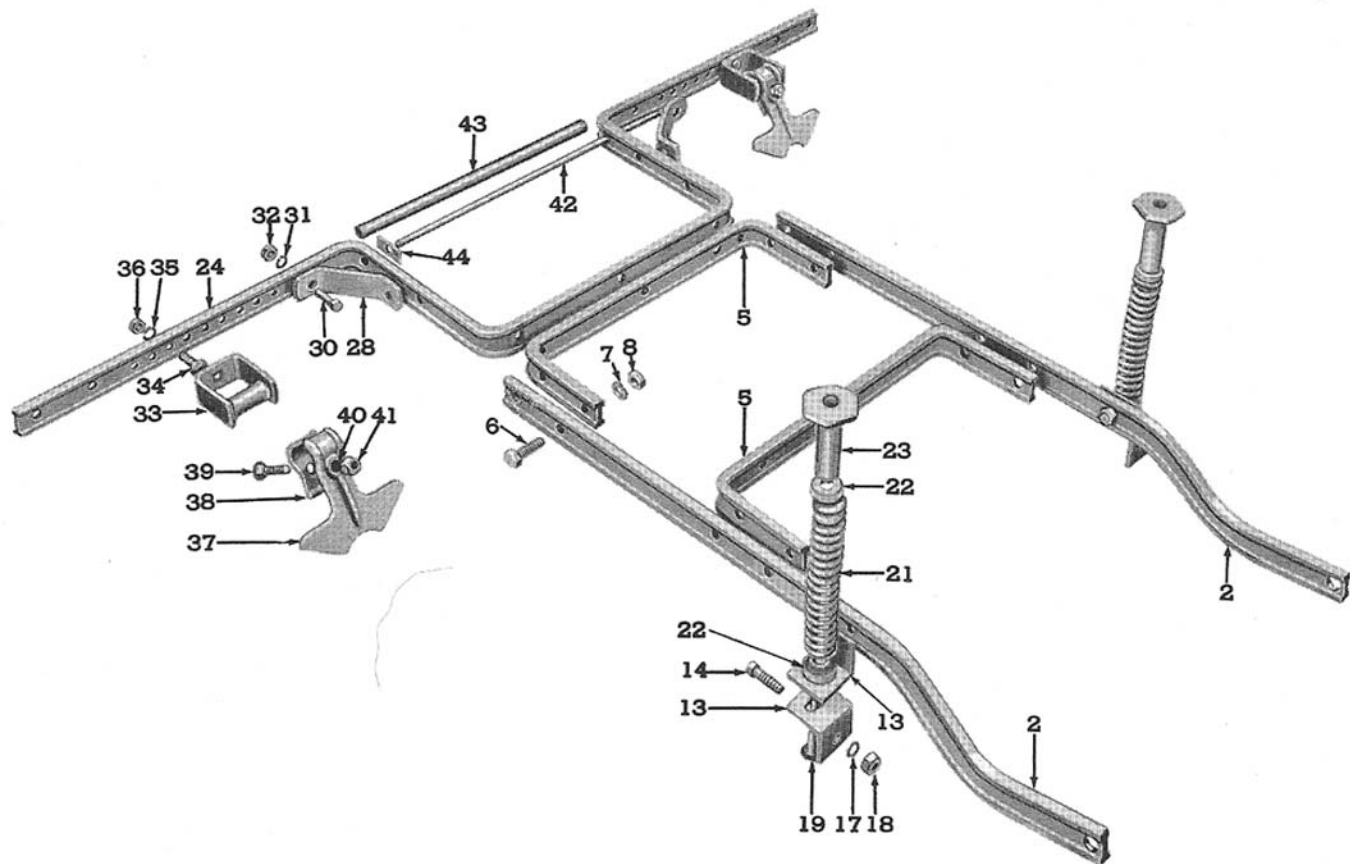


Figure 15 - Rear Frame & Scraper Bar - Models 12-87, 88, 89

Planter

FIG. 14&15	PART NO.	NAME AND DESCRIPTION	QTY. REQ.		
			12-50 12-62	12-87	12-88 12-89
<u>GROUP 2-1 REAR FRAME & SCRAPER BAR ASSEMBLY FOR PLANTERS</u>					
1	125646	FRAME, Rear	1		
2	128158	FRAME, Rear		2	2
3	125844	RIVET, 7/16 x 2 Drilled)			
4		COTTER PIN, 1/8 x 1) Frame to Hinge	2		
5	128161	BRACE, Frame	1	2	2
6		BOLT, 7/16 - 1 1/4 x 2 Hex Hd)		4	4
-		BOLT, 7/16 - 1 1/4 x 1-1/2 Hex Hd)		2	2
-		BOLT, 7/16 - 1 1/4 x 2-1/4 Carr) Brace to		2	2
7		LOCKWASHER, 7/16) Wheel Frame		8	8
8		NUT, 7/16 - 1 1/4 Hex)		8	8
9	125651	SEAT, Spring, Right	1		
10	125652	SEAT, Spring, Left	1		
11	125653	ANCHOR, Spring, Right	1		
12	125654	ANCHOR, Spring, Left	1		
13	127999	ANCHOR, Spring		4	4
14		BOLT, 7/16 - 1 1/4 x 1-3/8 Hex Hd)	2	2	2
15		BOLT, 7/16 - 1 1/4 x 1-3/4 Carr) Bracket & Bar	8		
16		BOLT, 7/16 - 1 1/4 x 2 Carr) to Frame	2		
17		LOCKWASHER, 7/16)	12	2	2
18		NUT, 7/16 - 1 1/4 Hex	12		
19	125871	BOLT, Spring, 7/16 - 1 1/4 x 10" Drld	2	2	2
20		COTTER PIN, Bolt to Anchor	2		
21	125657	SPRING, Rear Frame Tension	2	2	2
22	125643	SEAT, Spring		4	4
23	125641	WHEEL, Hand	2	2	2
24	128016	BAR, Scraper	1	1	1
25		BOLT, 7/16 - 1 1/4 x 1-1/2 Hex Hd)			
26		LOCKWASHER, 7/16) Bar to Frame . .	3	3	3
27		NUT, 7/16 - 1 1/4 Hex)			
28	128004	BRACE, Scraper Bar, Used w/128016		2	2
29	125626	BRACE, Scraper Bar (Prior Models)	2		
30		BOLT, 7/16 - 1 1/4 x 1-1/2 Hex Hd) Brace	6	2	4
--		BOLT, 7/16 - 1 1/4 x 1-3/4 Hex Hd) To		2	
31		LOCKWASHER, 7/16) Bar	6	4	4
32		NUT, 7/16 - 1 1/4 Hex)	6	4	4
33	125627	BRACKET, Scraper (Welded Assembly)	2	2	2
34		BOLT, 7/16 - 1 1/4 x 1-1/4 Carr)			
35		LOCKWASHER, 7/16) Bracket to	2	2	2
36		NUT, 7/16 - 1 1/4 Hex) Scraper Bar			

Planter

FIG. 14, 15	PART NO.	NAME AND DESCRIPTION	QTY. REQ.		
			12-50 12-62	12-87	12-88 12-89
		<u>GROUP 2-1 REAR FRAME & SCRAPER BAR ASSEMBLY FOR PLANTERS (Cont'd)</u>			
37	125655	SCRAPER, Press Wheel	2	2	2
38	125656	CAP, Scraper	2	2	2
39		BOLT, 3/8 - 16 x 2 Carr)			
40		LOCKWASHER, 3/8) Scraper to Bracket . .	2	2	2
41		NUT, 3/8 - 16 Hex)			
42	125660	ROD, Tie, 7/16 - 14	1	1	1
43	125659	SPACER, 1/2 x 16-5/16 Pipe)	1	1	
--	125857	SPACER, 1/2 x 16-7/8 Pipe)			1
44	125648	WASHER, Channel) Tie Rod			2
45		LOCKWASHER, 7/16)	2	2	2
46		NUT, 7/16 - 14 Hex)	2	2	2
47	125650	BAR, Disc Coverer (Part of Disc Coverer Assy.)	1		

Planter

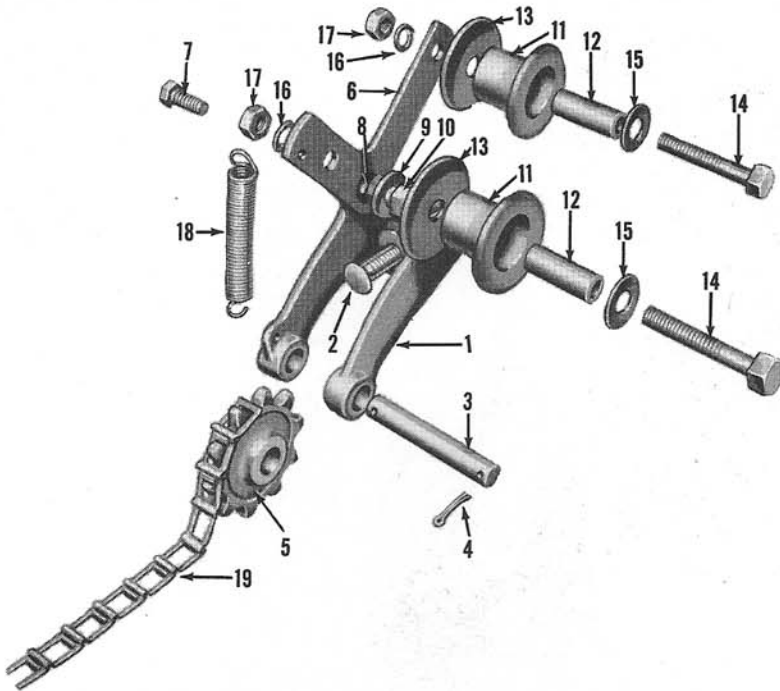


Figure 16 - Frame Idler Sprocket

FIG. 16	PART NO.	NAME AND DESCRIPTION	QTY. REQ.
<u>GROUP 2-2 FRAME IDLER SPROCKET FOR ALL CORN PLANTERS</u>			
1	125633	BRACKET, Idler Sprocket	1
2		BOLT, 7/16 - 14 x 1-1/2 Carr)	
-		LOCKWASHER, 7/16) Bracket to Center Frame . .	1
-		NUT, 7/16 - 14 Hex)	
3	125634	SHAFT, Idler, 5/8 x 3-11/16	1
4		COTTER PIN, 3/16 x 1 - Shaft to Bracket	2
5	125632	SPROCKET, Idler, Frame, 10 Teeth	1
6	127994	ARM, Tightener)	
7		BOLT, 7/16 - 20 x 1-1/4 Hex Hd)	
8	125826	SPACER, Pipe, 3/8 x 7/32) Arm to Bracket	1
9		WASHER, 7/16 Flat)	
10		NUT, 7/16 - 14 Hex)	
11	125639	ROLLER, Chain Tightener	2
12	125825	SPACER, Pipe, 3/8 x 1-3/8)	
13	128035	WASHER, 1/2 ID x 2-1/2 OD Flat)	
14		BOLT, 7/16 - 14 x 2-1/4 Hex Hd)	
15		WASHER, 7/16 Flat) Roller to Arm	2
16		LOCKWASHER, 7/16)	
17		NUT, 7/16 - 14 Hex)	
18	125658	SPRING, Chain Tightener Tension	1
19		CHAIN, Drive - 74 Links, No. 25 Chain (Service from Part No. 164100)	1
--	164100	CHAIN, Drive - 133 Links, No. 25 Steel Chain, 10 Ft. Long	AR

Planter

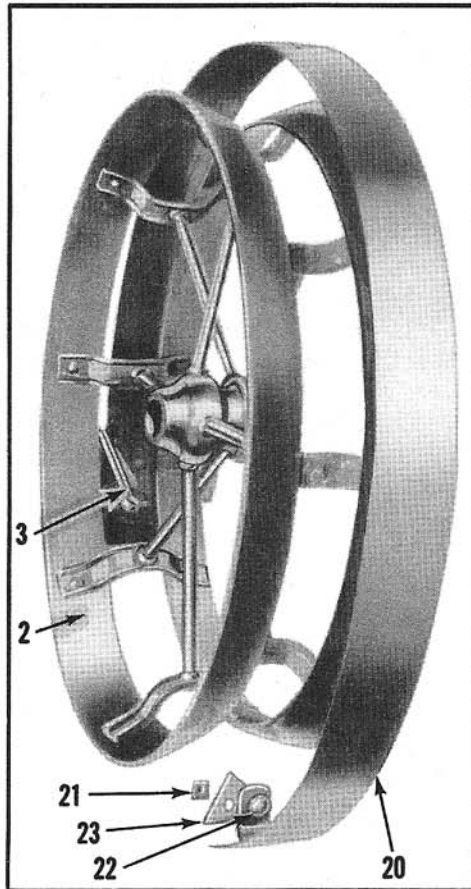
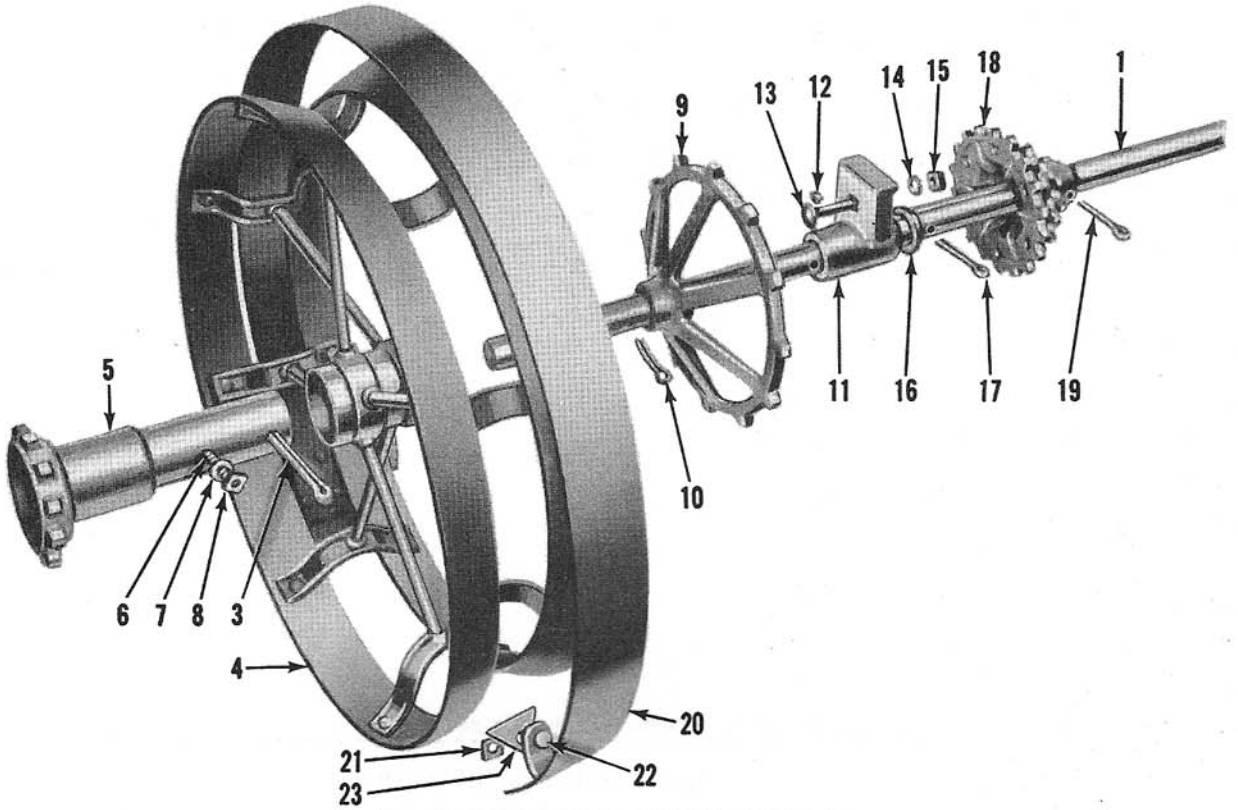


Figure 17 - Wheel & Axle Assembly

Planter

FIG. 17	PART NO.	NAME AND DESCRIPTION	QTY. REQ.		
			12-50 12-62	12-87	12-88 12-89
<u>GROUP 2-3 WHEEL AND AXLE ASSEMBLY For CORN PLANTERS</u>					
1	128011	AXLE, Rear, 1-1/8 x 49-1/2	1	1	1
2	128021	WHEEL, Press (Welded Assembly)		2	2
3		COTTER PIN, 5/16 x 3 - Wheel & Sprocket to Axle	2	2	2
4	125731	WHEEL, Press (Welded Assembly)	2		
5	125732	SPROCKET, Drive Wheel	2		
6		BOLT, 3/8 - 16 x 1 (Flow)			
7		LOCKWASHER, 3/8) Sprocket to Wheel . . .	2		
8		NUT, 3/8 - 16 Hex)			
9	125644	SPROCKET, Reel Drive)			
10		COTTER PIN, 5/16 x 2-1/4) Models 12-50, 87 only	1	1	
11	125697	BRACKET, Bearing, Rear Axle	2	2	2
12		FITTING, Lube, 1/8 - 27 x 3/4 Straight	2	2	2
--	125648	BLOCK, Filler (Rectangular Washer)	2		2
13		BOLT, 7/16 - 14 x 2-1/4 Carr)			
14		LOCKWASHER, 7/16) Bearing Bracket	2	2	2
15		NUT, 7/16 - 14 Hex) to Rear Frame			
16		WASHER, 1-1/4 x 1-3/4 x 1/8 Flat)			
17		COTTER PIN, 5/16 x 2) Bearing to Axle	2	2	2
18	125642	SPROCKET, Axle Drive, Cluster of 9,14,18 Teeth	1	1	1
19		COTTER PIN, 5/16 x 1-1/2 Sprocket	1	1	1
<u>EXTRA EQUIPMENT</u>					
20	121563	BAND ASSEMBLY, Wheel (Pair)		2	2
Consists of Band which is not serviced separately plus items listed below:					
21	128013	PLATE, Wedge		2	2
22		BOLT, 3/8 - 16 x 2-1/4 Hex Hd) Band and			
--		LOCKWASHER, 3/8) Plate		2	2
23		NUT, 3/8 - 16 Hex) to Wheel			

Planter

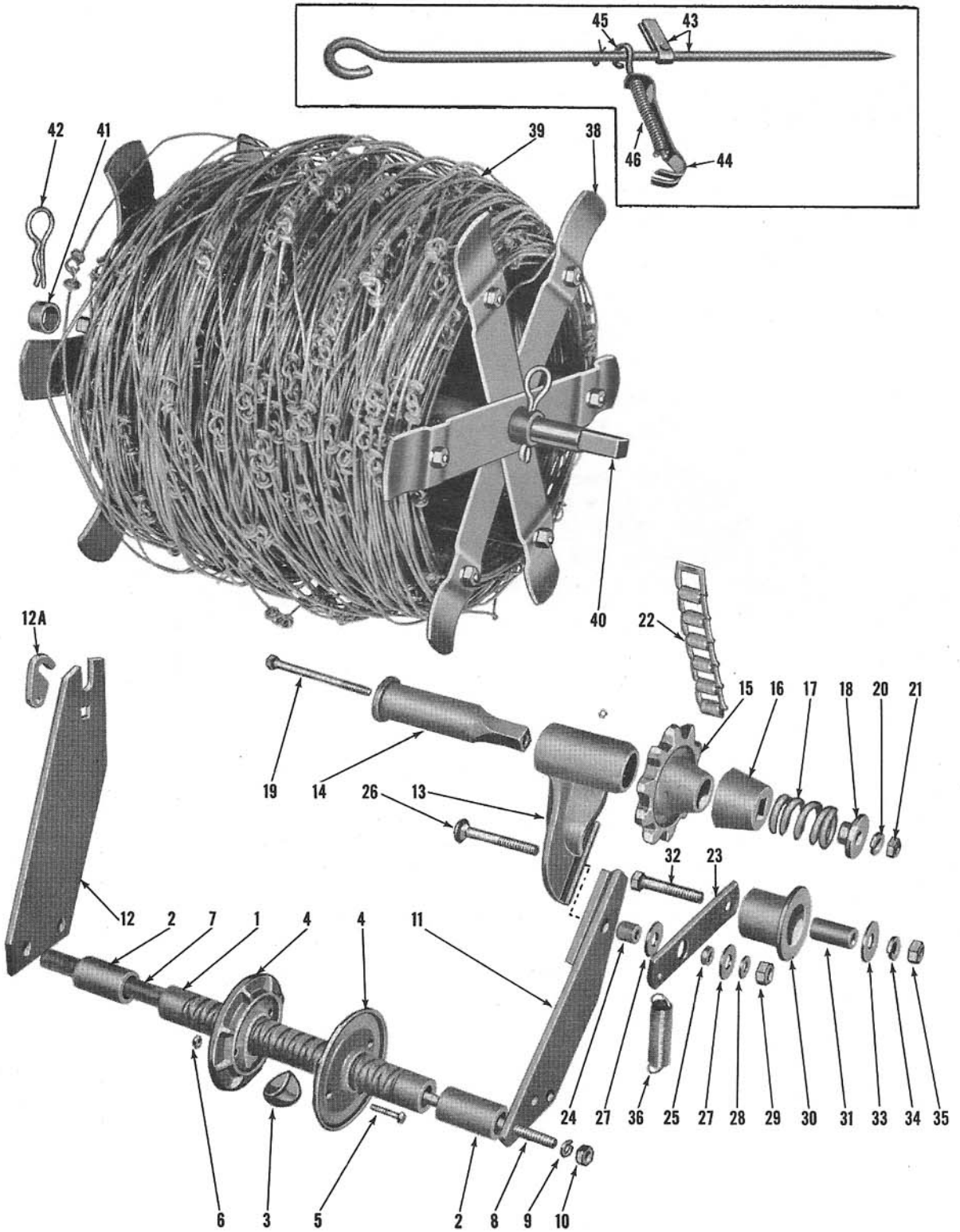


Figure 18 - Check Wire & Level Wind Parts

Planter

FIG. 18	PART NO.	NAME AND DESCRIPTION	QTY. REQ.
GROUP 2-4 CHECK WIRE AND LEVEL WIND PARTS <u>(Used on Models 12-50 & 12-87)</u>			
1	125661	SCREW, Level Wind	1
2	125824	SPACER, Pipe, 1 x 2-1/8	2
3	125629	DOG, Level Wind Screw Sheave	1
4	125630	SHEAVE, Level Wind	2
5		BOLT, 5/16 - 18 x 1-1/4 Hex Hd) Sheave	2
6		NUT, 5/16 - 18 Hex)	
7	125857	SPACER, Pipe, 1/2 x 16-5/16	1
8	125660	ROD, Tie, Level Wind	1
9		LOCKWASHER, 7/16) Tie Rod	2
10		NUT, 7/16 - 14 Hex)	
11	125662	BRACKET, Mounting, Reel and Sprocket	1
12	127998	BRACKET, Mounting, Reel	1
12A	128163	CLIP, Reel Retaining	1
--		BOLT, 5/16 - 18 x 7/8 Carr) Clip to Bracket	1
--		NUT, 5/16 - 18 Wing)	
--		BOLT, 1/2 - 13 x 2-1/4 Hex Hd) Bracket to Scraper Bar . . .	2
--		LOCKWASHER, 1/2)	
--		NUT, 1/2 - 13 Hex)	
13	125671	BRACKET, Reel Sprocket	1
14	125670	SPINDLE, Reel Sprocket	1
15	125668	SPROCKET, Reel, 10 Teeth	1
--	128454	SPROCKET, Reel, 10 Teeth	1
16	125849	WASHER, Sprocket, Bearing	1
17	125672	SPRING, Reel, Sprocket	1
18	125846	SEAT, Spring	1
19		BOLT, 3/8 - 16 x 4 Sq Hd) Sprocket and Spring to Spindle .	1
20		LOCKWASHER, 3/8)	
21		NUT, 3/8 - 16 Hex)	
22		CHAIN, Drive - 44 Links, No. 32 Chain (Service from Part No. 164101)	1
--	164101	CHAIN, Drive - 104 Links, No 32 Steel Chain, 10 Ft. Long . .	AR
23	125667	ARM, Idler	1
24	125828	SPACER, Pipe, 3/8 x 1/2)	1
25	125826	SPACER, Pipe, 3/8 x 7/32)	1
26		BOLT, 7/16 - 14 x 2-1/2 Carr) Arm to Bracket	1
27		WASHER, 7/16 Flat)	2
28		LOCKWASHER, 7/16)	1
29		NUT, 7/16 - 14 Hex)	1
30	125639	ROLLER, Chain Tightener	1
31	125825	SPACER, Pipe, 3/8 x 1-3/8)	
32		BOLT, 7/16 - 14 x 2-1/4 Hex Hd) Roller to Arm	1
33		WASHER, 7/16 Flat)	
34		LOCKWASHER, 7/16)	
35		NUT, 7/16 - 14 Hex)	

Planter

FIG. 18	PART NO.	NAME AND DESCRIPTION	QTY. REQ.
		<u>GROUP 2-4 CHECK WIRE AND LEVEL WIND PARTS</u> <u>(Used on Models 12-50 & 12-87) (Cont'd)</u>	
36	125658	SPRING, Idler Arm Tension	1
38	125754	REEL ASSEMBLY (Welded and Bolted Assembly)	1
39		WIRE, Check, 40" - 80 Rods (Procure Locally)	1
40	128039	SHAFT, Reel	1
41	125665	COLLAR, Reel, Shaft	1
42	128296	PIN, Hair - Reel Shaft	2
43	125745	STAKE, Anchor, w/Stop	2
44	125749	BRACKET, Stake Anchor	2
45	125750	EYEBOLT, Stake Anchor Bracket	2
46	125751	SPRING, Stake Anchor Bracket	2
--		COTTER PIN, 3/16 x 1-1/4	2
--		WASHER, 17/64 Flat	2
--		CHECK WIRE, 42" 80 Rods (Procure Locally)	1

Planter

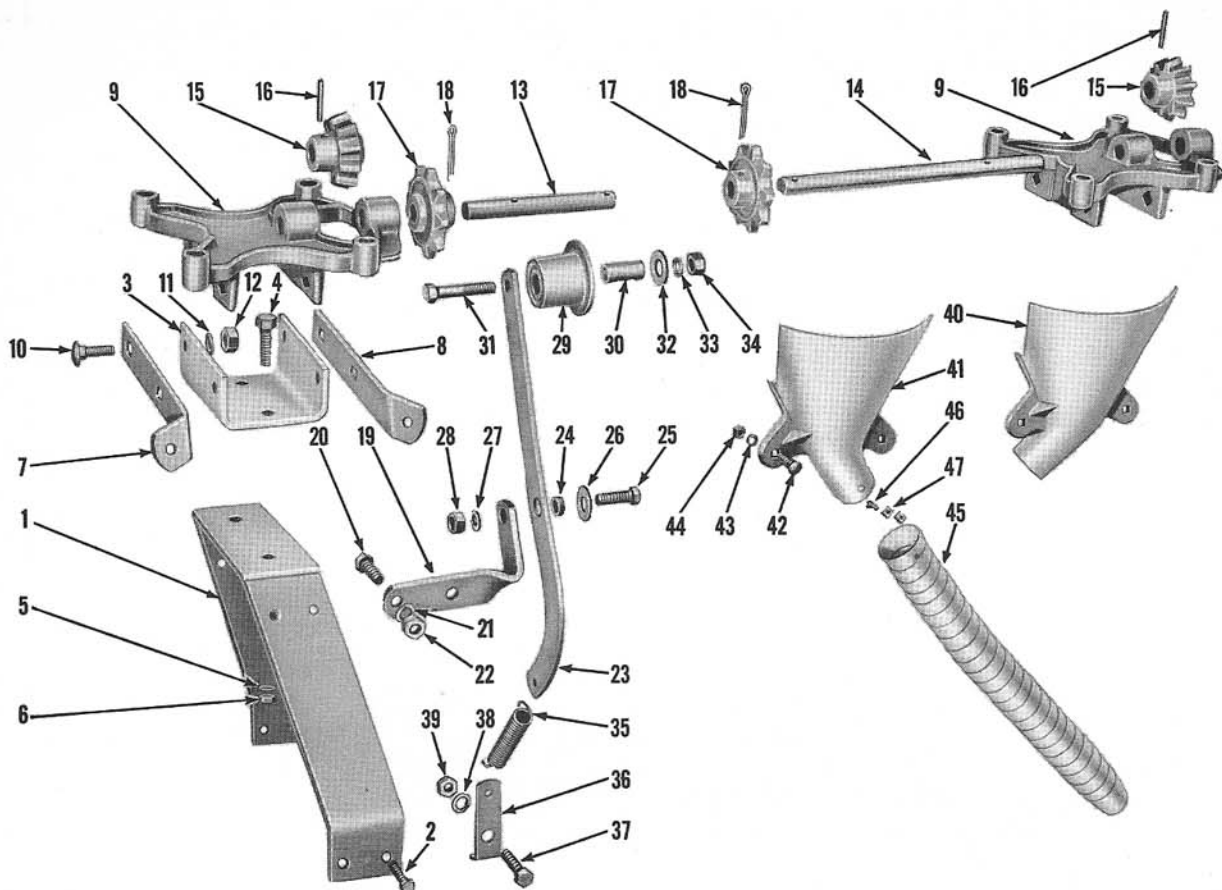


Figure 19 - Fertilizer Mounting & Drive Parts for Models 12-50, 62

FIG. 19	PART NO.	NAME AND DESCRIPTION	QTY. REQ.
GROUP 3-1 FERTILIZER MOUNTING AND DRIVE PARTS FOR MODELS 12-50, 62			
1	125674	BRACKET, Mounting, Fertilizer Hopper (Welded)	2
-		BOLT, 7/16 - 14 x 1-1/2 Hex Hd - Bracket to Rear Bar	4
2		BOLT, 7/16 - 14 x 2-1/2 Hex Hd - Bracket to Front Bar	4
-		LOCKWASHER, 7/16	8
-		NUT, 7/16 - 14 Hex	8
3	125680	PLATE, Bearing Bracket, Fertilizer	2
4		BOLT, 7/16 - 14 x 1-1/2 Hex Hd)	
5		LOCKWASHER, 7/16	
6		NUT, 7/16 - 14 Hex	
) Plate to Mounting Bracket	4
7	125682	STRAP, Fertilizer Hopper Spout, R. H.	2
8	125683	STRAP, Fertilizer Hopper Spout, L. H.	2
9	126138	BRACKET, Bearing, Fertilizer Hopper	2
10		BOLT, 3/8 - 16 x 1-1/4 Carr)	
11		LOCKWASHER, 3/8	
12		NUT, 3/8 - 16 Hex	
) Bracket and Straps to Plate	8

Planter

FIG. 19	PART NO.	NAME AND DESCRIPTION	QTY. REQ.
<u>GROUP 3-1 FERTILIZER MOUNTING AND DRIVE PARTS FOR MODELS 12-50,62 (Cont'd)</u>			
13	125684	SHAFT, Hopper Bearing, Right	1
14	125685	SHAFT, Hopper Bearing, Left	1
15	125686	GEAR, Pinion, Hopper Bearing Shaft	2
16		PIN, Straight, 3/16 x 1-3/8 - Gear to Shaft	2
17	125687	SPROCKET, Drive, Hopper	2
18		COTTER PIN, 3/16 x 1-3/8 - Sprocket to Shaft	2
--		CHAIN, Drive, 63 Links, No. 32 Chain (Service from Part No. 164101)	2
--	164101	CHAIN, Drive, 104 Links, No. 32 Steel Chain 10 Ft Long . .	AR
19	125850	SUPPORT, Idler Arm, Right	1
--	125851	SUPPORT, Idler Arm, Left	1
20		BOLT, 7/16 - 1 1/4 x 1-1/4 Hex Hd)	
21		LOCKWASHER, 7/16) Support to Mounting Bracket	4
22		NUT, 7/16 - 1 1/4 Hex)	
23	125689	ARM, Idler	2
24	125826	SPACER, Pipe, 3/8 x 7/32)	
25		BOLT, 7/16 - 1 1/4 x 1-1/4 Hex Hd)	
26		WASHER, 7/16 Flat) Arm to Support	2
27		LOCKWASHER, 7/16)	
28		NUT, 7/16 - 1 1/4 Hex)	
29	125639	ROLLER, Chain	2
30	125825	SPACER, Pipe, 3/8 x 1-3/8)	
31		BOLT, 7/16 - 1 1/4 x 2-1/4 Hex Hd)	
32		WASHER, 7/16 Flat) Roller to Arm	2
33		LOCKWASHER, 7/16)	
34		NUT, 7/16 - 1 1/4 Hex)	
35	125836	SPRING, Chain Tightener Tension	2
36	125645	ANCHOR, Idler Arm Spring	2
37		BOLT, 7/16 - 1 1/4 x 1-1/2 Hex Hd)	
38		LOCKWASHER, 7/16) Anchor to Rear Bar	2
39		NUT, 1/4 - 20 Hex)	
40	125804	SPOUT, Fertilizer, Right	1
41	125805	SPOUT, Fertilizer, Left	1
42		BOLT, 1/4 - 20 x 3/4 Carr)	
43		LOCKWASHER, 1/4) Spout to Base	4
44		NUT, 1/4 - 20 Hex)	
45	125806	TUBE, Ribbon, Fertilizer	2
46		BOLT, #10 - 32 x 1/2 Stove)	2
47		NUT, #10 - 32 Hex) Tube to Spout and Boot	4

Planter

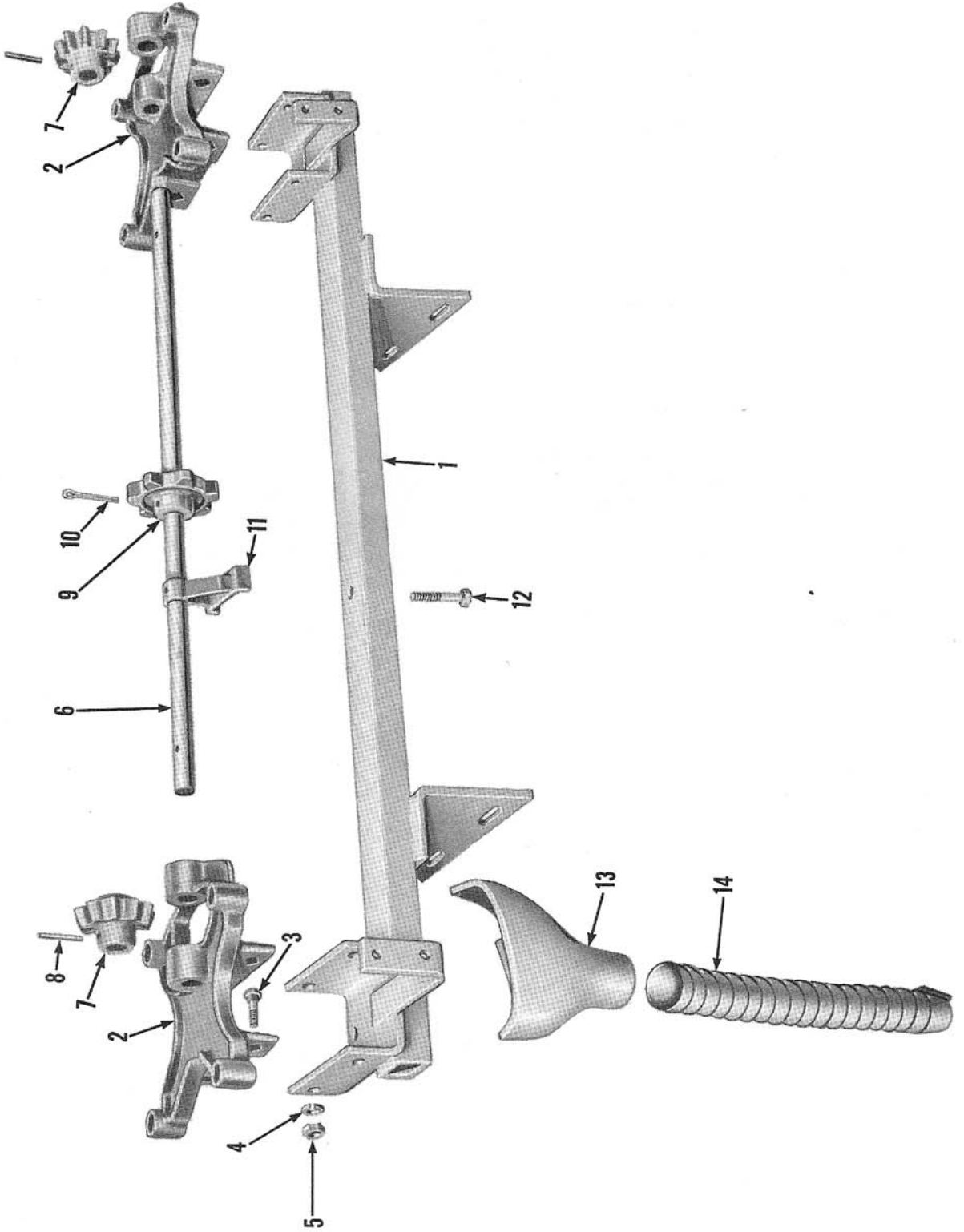


Figure 20 - Fertilizer Mounting & Drive Parts for Models 12-87, 88, 89

Planter

FIG. 20	PART NO.	NAME AND DESCRIPTION	QTY. REQ.
GROUP 3-1A FERTILIZER MOUNTING & DRIVE PARTS FOR MODELS 12-87, 88, 89			
1	128159	BAR, Mounting, Fertilizer Hopper (Welded Assembly)	1
2	126138	BRACKET, Bearing, Fertilizer Hopper	2
3		BOLT, 3/8 - 16 x 1-1/4 Carr)	
4		LOCKWASHER, 3/8) Bracket to Bar	8
5		NUT, 3/8 - 16 Hex)	
6	128034	SHAFT, Hopper Bearing	1
7	125686	GEAR, Pinion, Hopper Bearing Shaft	2
8		PIN, 3/16 x 1-3/8 Str - Gear to Shaft	2
9	125687	SPROCKET, Driven, Fertilizer	2
10		COTTER PIN, 3/16 x 1-3/8 - Sprocket to Shaft	2
11	125466	BEARING, Fertilizer Shaft	1
--		FITTING, Lube, 5/16 x 9/32 Drive	1
12		BOLT, 7/16 - 14 x 2-3/8 Hex)	
--		LOCKWASHER, 7/16) Bearing to Bar	1
--		NUT, 7/16 - 14 Sq)	
--		CHAIN, Drive, 38 Links, No. 32 Chain (Service from Part No. 164101)	2
--	164101	CHAIN, Drive, 104 Links, No. 32 Steel Chain - 10 Ft. Long .	AR
--	128001	SPROCKET, Fertilizer Drive, 11 Teeth	1
--		COTTER PIN, 5/16 x 2-1/2 - Sprocket to Wheel Axle	1
13	128087	SPOUT, Fertilizer	2
--		BOLT, 1/4 - 20 x 3/4 Stove)	
--		LOCKWASHER, 1/4) Spout to Bar	2
--		NUT, 1/4 - 20 Sq)	
14	128064	TUBE, Ribbon, Fertilizer	2
--		BOLT, #10 - 32 x 1/2 Stove)	
--		NUT, #10 - 32 Sq) Tube to Spout and Bar	4

Planter

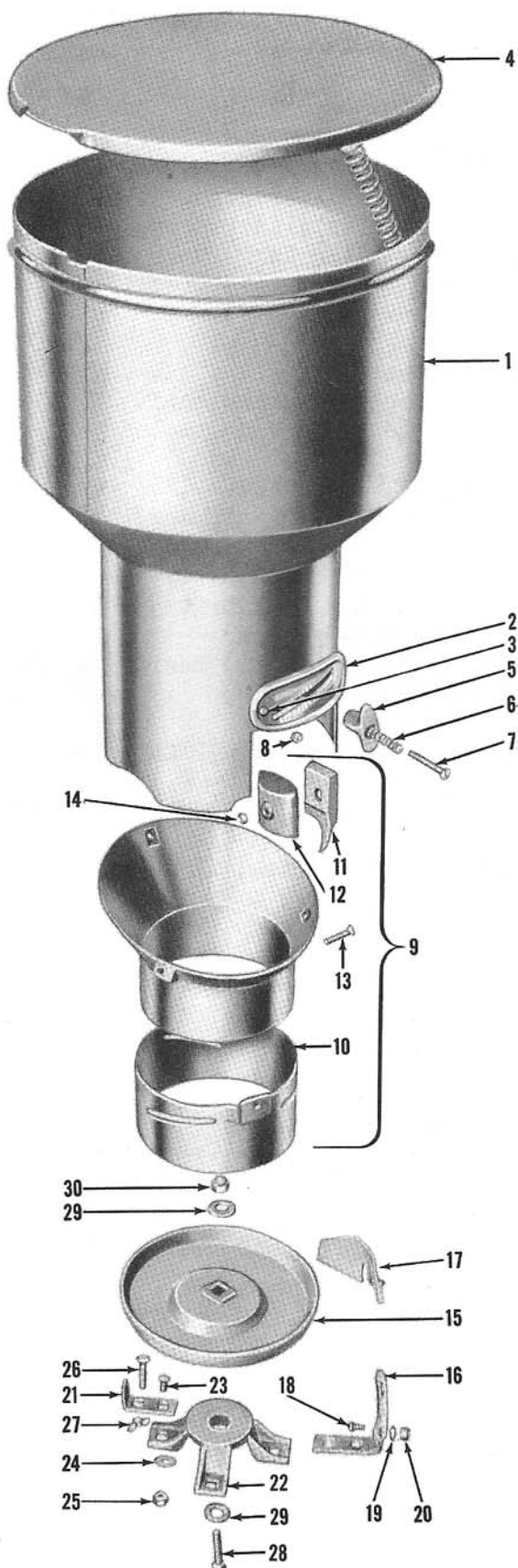


Figure 21 - Fertilizer Hopper Assembly

Planter

FIG. 21	PART NO.	NAME AND DESCRIPTION	QTY. REQ.
		<u>GROUP 3-1B FERTILIZER HOPPER ASSEMBLY, COMPLETE, #128078</u>	
		<u>For Models 12-50, 62, 87, 88, 89</u>	
1	126177	HOPPER ASSEMBLY, Fertilizer (Riveted Assembly)	2
		Consists of Hopper which is not serviced separately plus items listed below:	
2	125783	INDEX, Feed	2
3		RIVET, 3/16 x 3/8 Rd Hd - Index to Hopper	4
-	125802	COVER, Hopper, Rectangular (Prior Model)	2
4	129543	COVER, Hopper, Round	2
-	125714	LATCH, Hopper Cover	4
-	125717	SPRING, Hopper Cover Latch	4
-	125713	RIVET, 1/4 x 1 Rd Hd, Drld)	
-		COTTER PIN, 1/8 x 5/8) Latch and Spring to Hopper . .	4
5	125798	LEVER, Feed	2
6	125799	SPRING, Feed Lever	2
7		BOLT, 1/2 - 20 x 2 Rd Hd Stove)	
8		NUT, 1/2 - 20 Square) Lever to Hopper	2
9	125784	RING ASSEMBLY, Feed Gauge	2
		Consists of Ring which is not serviced separately plus items listed below:	
10	125785	GAUGE, Feed, w/Strap (Riveted)	2
11	125788	AGITATOR	2
12	125789	HOUSING, Agitator	2
13		BOLT, 1/4 - 20 x 1/2 Rd Hd Stove)	
14		NUT, 1/4 - 20 Square) Ring Assembly to Hopper .	6
--		BOLT, 1/4 - 20 x 1-1/2 Flat Hd Stove)	
--		NUT, 1/4 - 20 Square) Housing to Ring . . .	2
15	125792	BOTTOM, Hopper	2
16	125794	STRAP, Hopper Bottom, Right	2
17	125797	SCRAPER, Hopper Bottom	2
18		BOLT, 1/4 - 20 x 1/2 Carr)	
19		LOCKWASHER, 1/4) Straps to Scraper & Hopper . . .	10
20		NUT, 1/4 - 20 Hex)	
21	125795	STRAP, Hopper Bottom, Left	2
--	125796	STRAP, Hopper Bottom, Rear	4
22	125793	BRACKET, Bearing, Hopper Bottom	2
23		BOLT, 5/16 - 18 x 3/4 Flat Hd)	
24		LOCKWASHER, 5/16) Straps to Bracket	8
25		NUT, 5/16 - 18 Hex)	
26		BOLT, 5/16 - 18 x 1-3/4 Carr)	
27		NUT, 5/16 - 18 Wing) Hopper Assembly to Base . . .	8
--	128066	AGITATOR, Center (Welded Assembly)	2
28		BOLT, 7/16 - 14 x 1-3/4 Carr)	
29		WASHER, 7/16 Flat) Agitator, Bottom and	2
30		NUT, 7/16 - 14 Hex) Bracket Retaining	

Planter

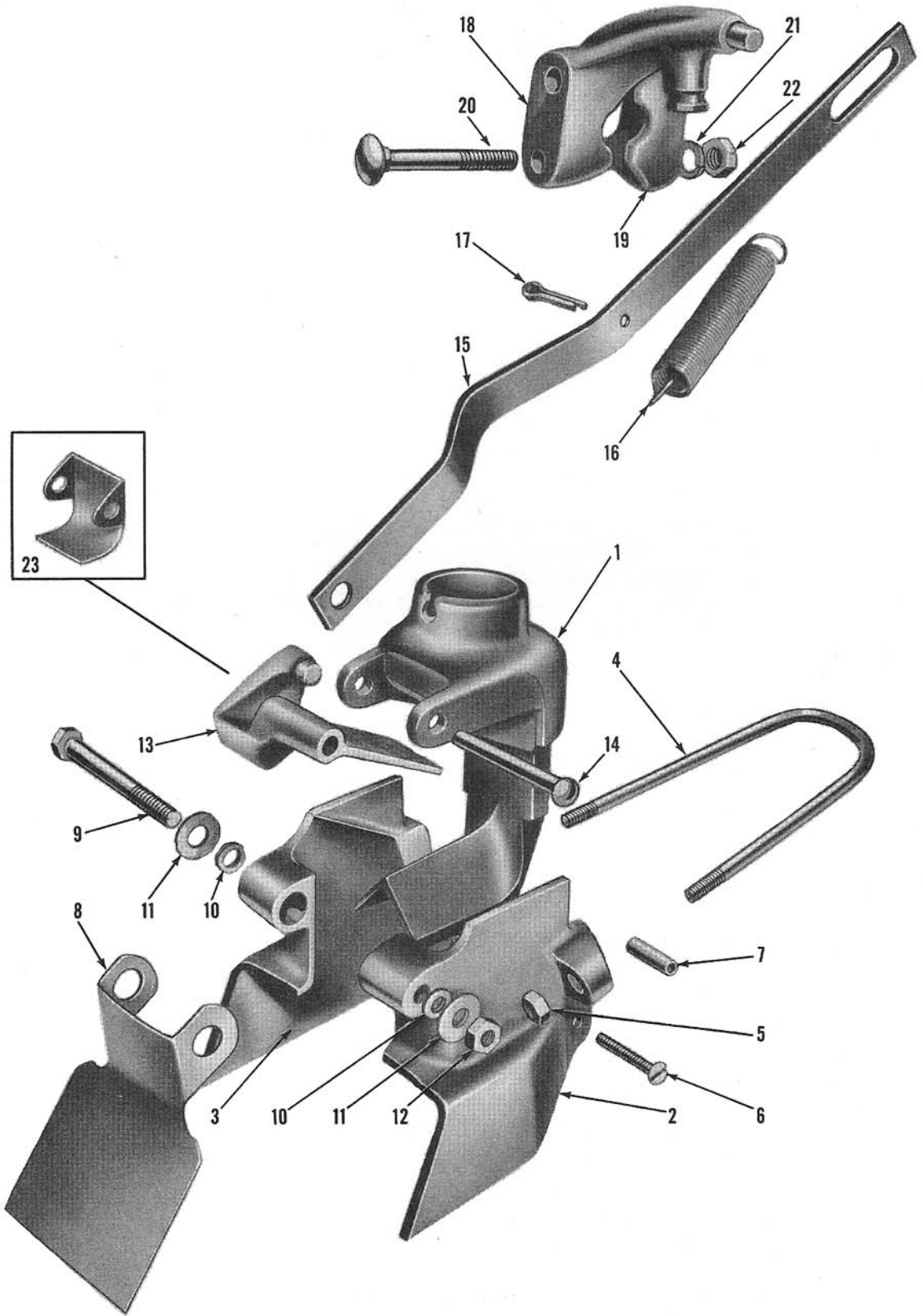


Figure 22 - Fertilizer Boot Assembly

Planter

FIG. 22	PART NO.	NAME AND DESCRIPTION	QTY. REQ.
<u>GROUP 3-1C FERTILIZER BOOT ASSEMBLY</u>			12-50,87,89 12-62,88
FOR MODELS 12-50,62,87,88,89			
1	125701	DIVIDER, Spout	2 2
2	125704	SHOE, Fertilizer Spreader, Right	2 2
3	125705	SHOE, Fertilizer Spreader, Left	2 2
4	125706	U-BOLT, 5/16 - 18)	2 2
5		NUT, 5/16 - 18 Hex) Shoe to Shank	4 4
6		BOLT, 1/4 - 20 x 1-5/8 Flat Hd Stove)	2 2
7	125854	SPACER, Pipe, 1/8 x 1-3/16)Right Shoe to Left Shoe	2 2
8	125707	SHUTTER, Fertilizer Shoe	2 2
9		BOLT, 5/16 - 18 x 2-3/4 Square Hd)	2 2
10	125853	SPACER, Pipe, 1/4 x 1/8)	4 4
11		WASHER, 5/16 Flat) Shutter to Shoe	4 4
12		NUT, 5/16 - 18 Hex)	2 2
13	125702	VALVE, Fertilizer Shoe, Right	1
--	125703	VALVE, Fertilizer Shoe, Left	1
14	125852	RIVET, 5/16 x 2-1/2 Rd Hd Drld)	2 2
--		COTTER PIN, 1/8 x 3/4) Valve or Baffle to Shoe	2 2
15	125692	LINK, Trip, Right	1
--	125691	LINK, Trip, Left	1
16	125836	SPRING, Trip Link	2
17		COTTER PIN, 3/16 x 1 - Spring to Link	2
18	125700	ARM, Trip	2
--		COTTER PIN, 1/8 x 3/4 - Arm thru Link	2
19	125694	CAP, Trip Arm	2
20		BOLT, 3/8 - 16 x 2-3/4 Carr)	
21		LOCKWASHER, 7/16) Arm to Cap	4
22		NUT, 3/8 - 16 Hex)	
23	125891	BAFFLE, Fertilizer Shoe	2

Planter

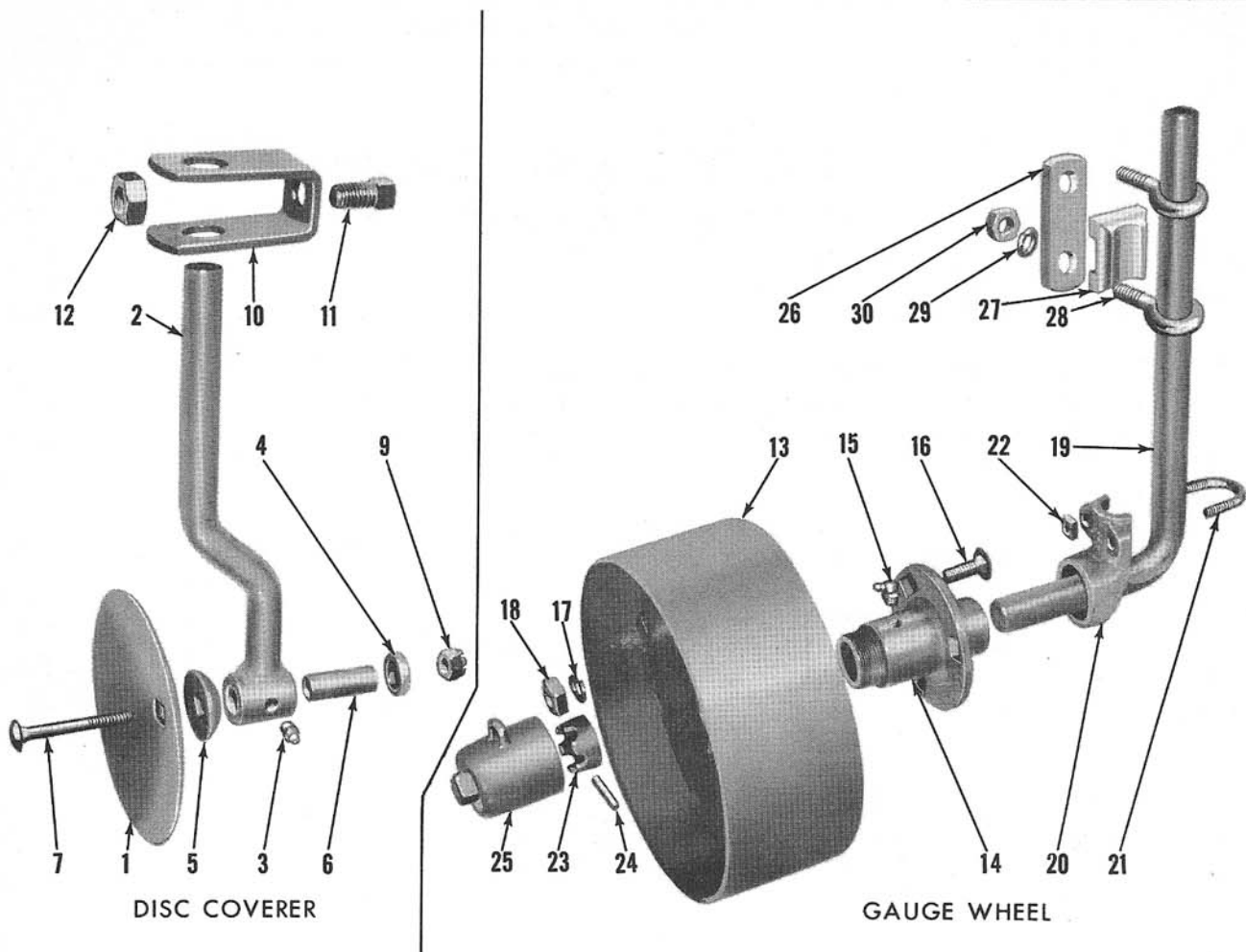


Figure 23 - Disk Coverer and Gauge Wheel Assemblies

FIG. 23	PART NO.	NAME AND DESCRIPTION	QTY. REQ.
<u>GROUP 4-1 DISC COVERER ASSEMBLY FOR MODELS 12-50, 62</u>			
1	125809	DISC, Coverer	4
2	125810	STANDARD, Disc Coverer	4
3		FITTING, Lube, 1/8 Straight - Standard	4
4	125813	WASHER, Disc	4
5	125814	WASHER, Disc	4
6	125869	BUSHING, Pipe, 3/8 x 1-23/32	4
7		BOLT, 3/8 - 16 x 3 Hex)	
9		NUT, 3/8 - 16 Hex Jam) Disc to Standard	4
10	125815	CLAMP ASSEMBLY, Disc Coverer Consists of Clamp which is not serviced separately plus items listed below:	4
11		SET SCREW, 5/8 - 11 x 1 Sq Hd, Cup Pt	4
12		NUT, 5/8 - 11 Sq	4
--		BAR, Disc Coverer (Procure Locally)	1

Planter

FIG. 23	PART NO.	NAME AND DESCRIPTION	QTY. REQ.
		<u>GROUP 4-2 GAUGE WHEEL ASSEMBLY FOR MODELS 12-50, 62</u>	
13	125734	WHEEL, Gauge (Welded Assembly)	2
14	125742	BOX, Wheel	2
15		FITTING, Lube, 1/8 - 67-1/2° - Wheel Box	2
16		BOLT, 1/2 - 13 x 1-1/4 Carr)	
17		LOCKWASHER, 1/2) Box to Wheel	6
18		NUT, 1/2 - 13 Sq)	
19	125868	AXLE, Gauge Wheel	2
20	125740	SHIELD, Sand	2
21	125741	U-BOLT, 3/8 - 16) Shield to Axle	2
22		NUT, 3/8 - 16 Sq)	4
23	125739	WASHER, Axle	2
24		PIN, Straight, 5/16 x 1-5/8 Axle	2
25	125738	CAP, Dust	2
26	125928	PLATE, Clamp	2
27	125926	BLOCK, Clamp	2
28	104306	EYEBOLT, 5/8 - 11	4
29		NUT, 5/8 - 11 Hex) Eyebolt	4
30		LOCKWASHER, 5/8)	4

Planter

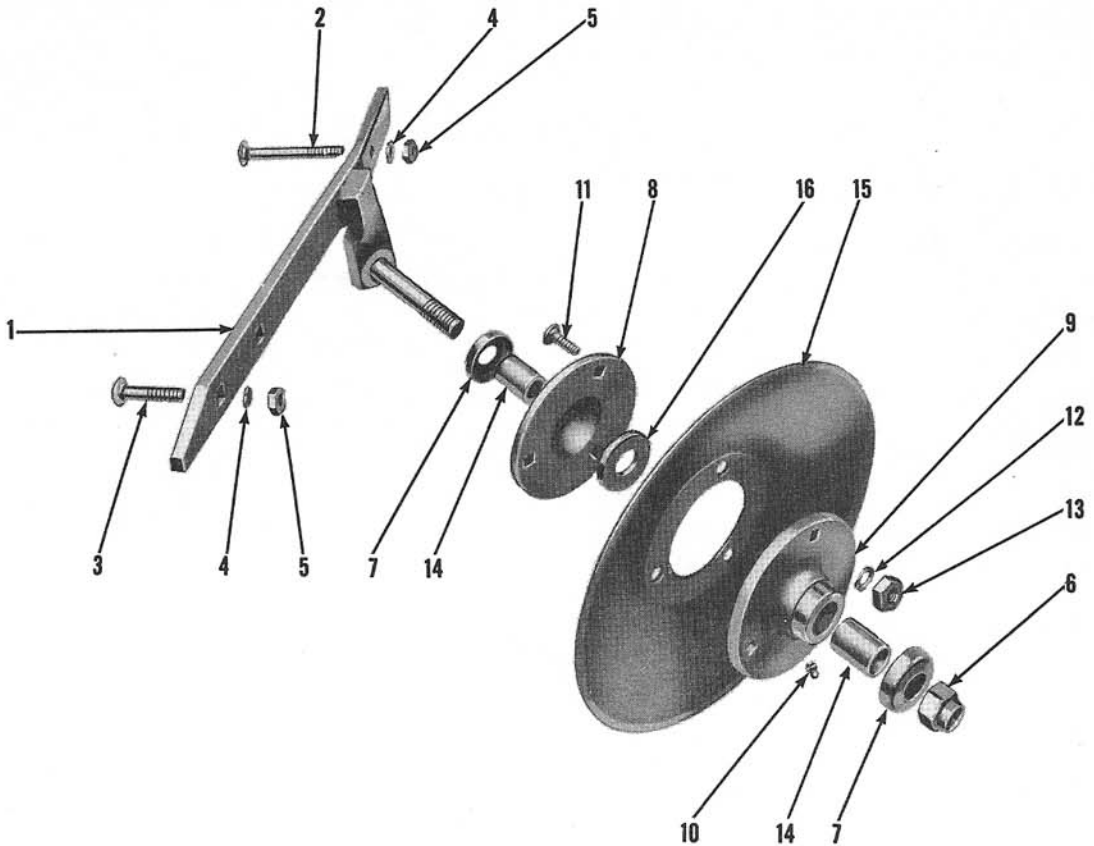


Figure 24 - Disc Opener Assembly

FIG. 24	PART NO.	NAME AND DESCRIPTION	QTY. REQ.
<u>GROUP 4-3 DISC OPENER ASSEMBLY (Model 12-63)</u>			
-	125876	SUPPORT ASSEMBLY, Right (Welded)	2
1	125880	SUPPORT ASSEMBLY, Left (Welded)	2
2		BOLT, 7/16 - 14 x 3-1/2 Carr. - Support to Shank	2
3		BOLT, 7/16 - 14 x 2 Carr - Support to Shank Opener	4
4		LOCKWASHER, 7/16	6
5		NUT, 7/16 - 14 Hex	6
6		NUT, 3/4 - 10 Lock - Support Axle Shaft Hex, Jam	8
7	125887	CAP, Dust	8
8	125885	HUB, Disc, Inner	4
9	125886	HUB, Disc, Outer	4
10		FITTING, Lube, 1/4 Straight - Inner Hub	4
11		BOLT, 3/8 - 16 x 1-1/4 Carr)	
12		LOCKWASHER, 3/8) Inner and Outer Hub to Disc	12
13		NUT, 3/8 - 16 Hex)	
14	125888	BUSHING, Disc Opener	8
15	125883	DISC, Opener - 12" Dia	4
16	125889	WASHER, Thrust	4

Planter

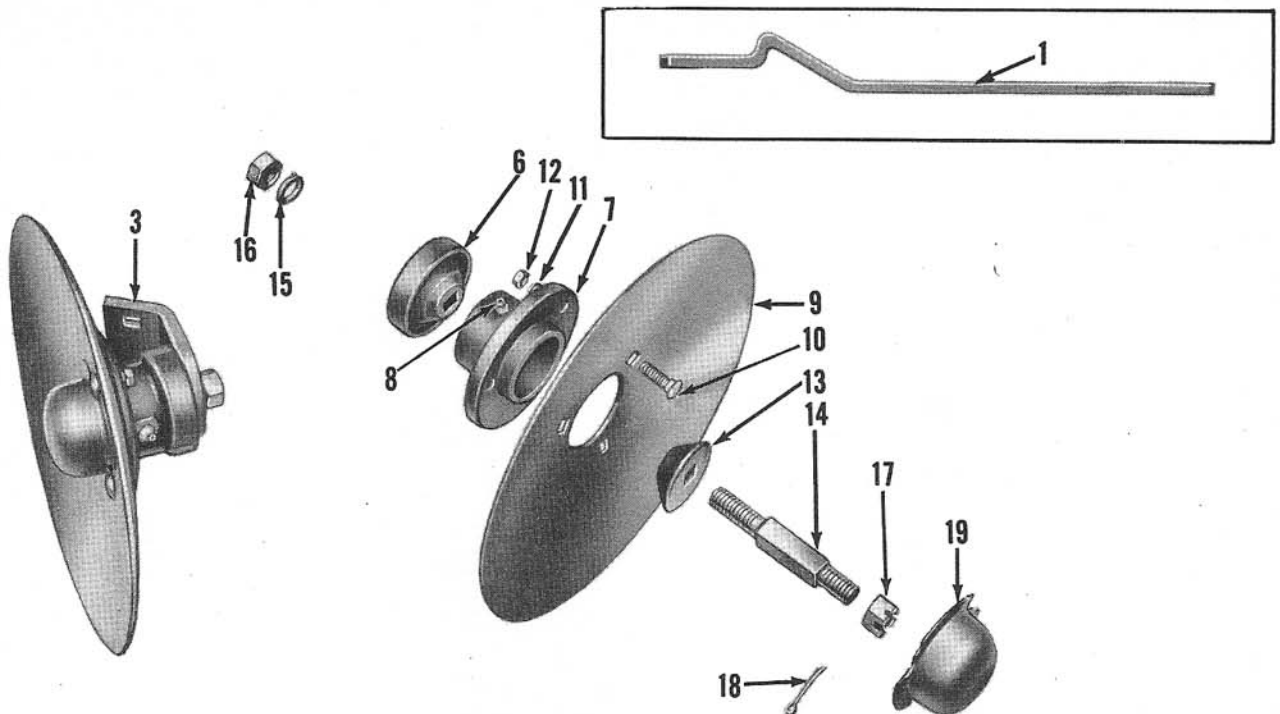


Figure 25 - Disc Opener Assembly

FIG. 25	PART NO.	NAME AND DESCRIPTION	QTY. REQ.
<u>GROUP 4-3A #121128 DISC OPENERS FOR Model 12-88</u>			
1	121119	BRACKET, Disc Opener	4
-	128260	BRACKET, Disc Opener (Prior Model)	2
3	132941	BRACKET, Disc Hiller (Prior Model)	4
-	302323-S8	BOLT, 7/16 - 14 x 1-1/2 Carr)	6
-	302345	BOLT, 7/16 - 14 x 3 Carr)	2
-		WASHER, 7/16 Flat) Bracket to Planter	2
-		LOCKWASHER, 7/16)	8
-		NUT, 7/16 - 14 Hex)	8
6	132940	BEARING, Inner	4
7	132937	HUB, Bearing	4
8	87901-S	FITTING, Lube, 1/8 - 27 x 3/4 Straight	4
9	132938	DISC, 12"	4
10		BOLT, 5/16 - 18 x 1 Carr)	
11		LOCKWASHER, 5/16) Disc to Hub	12
12		NUT, 5/16 - 18 Hex)	
13	132936	BEARING, Outer	4
14	132935	SPINDLE, Disc Hiller	4
15		LOCKWASHER, 5/8)	
16		NUT, 5/8 - 18 Hex) Bearing Retaining	4
17		NUT, 5/8 - 18 Hex, Slotted)	
18		COTTER PIN, 1/8 x 1) Spindle Retaining	4
19	132934	CAP, Dust	4

Planter

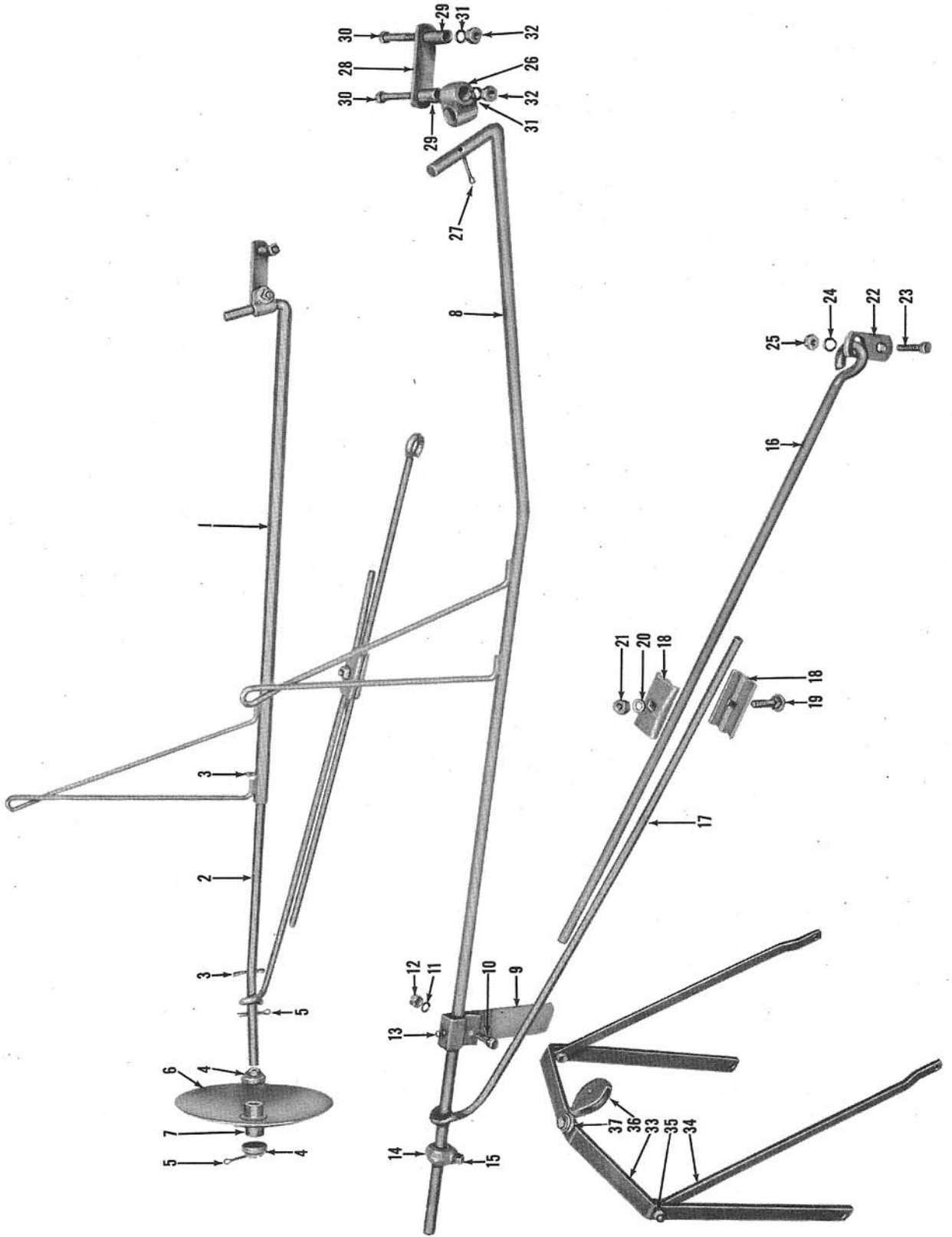


Figure 26 - Semi-Automatic Disc & Hook Marker Assemblies

Planter

FIG. 26	PART NO.	NAME AND DESCRIPTION	QTY.	REQ.
		GROUP 5-1 SEMI-AUTOMATIC DISC MARKER ASSEMBLY (Model 12-65, 92) <u>* SEMI-AUTOMATIC HOOK MARKER ASSEMBLY (Model 12-72, 93)</u>	2	12-65,92 12-72,93
1	127988	ROD, Marker, (Welded Assembly) (In Pairs)	2	
2	127986	SHAFT, Disc Marker (In Pairs)	2	
3		COTTER PIN, 1/4 x 1-1/2 - Shaft to Rod	4	
4	125910	COLLAR, Disc Hub	4	
5		COTTER PIN, 1/4 x 1-1/2 - Collar to Shaft	4	
-	125907	DISC and HUB ASSEMBLY, Marker	2	
		Consists of:		
6	132938	DISC, Marker, 12"	2	
7	125909	HUB, Disc	2	
-		RIVET, 1/4 x 5/8 Rd Hd - Hub to Disc	6	
-	126000	ROD, Marker (Welded Assembly) (12-72)	2	
8	128015	ROD, Marker (Welded Assembly)	2	
--	126004	POINT, Marker, Right (12-72)	1	
-	126005	POINT, Marker, Left (12-72)	1	
9	128018	POINT, Marker	2	
10		BOLT, 7/16 - 1 1/4 x 1 Hex Hd)		
11		LOCKWASHER, 7/16)		
12		NUT, 7/16 - 1 1/4 Hex) Point to Rod	2	
13		SET SCREW, 3/8 - 16 x 3/4 Sq Hd, Cup Pt)		
--		NUT, 3/8 - 16 Sq)		
14	126020	COLLAR, Marker Rod	2	
15		SET SCREW, 1/2 - 13 x 3/4 Sq Hd Cup Pt - Collar to Rod	2	
16	126018	ROD, Brace, w/Eye	2	2
17	125699	ROD, Brace, w/Eye	2	2
18	126019	CLAMP, Brace Rod	4	4
19		BOLT, 7/16 - 1 1/4 x 1-3/4 Carr)		
20		LOCKWASHER, 7/16) Clamps to Rods	2	2
21		NUT, 7/16 - 1 1/4 Hex)		
22	126021	STRAP, Retainer, Brace Rod	2	2
23		BOLT, 7/16 - 1 1/4 x 1-1/4 Hex Hd)		
24		LOCKWASHER, 7/16) Strap to Bar	2	2
25		NUT, 7/16 - 1 1/4 Hex)		
26	126015	SWIVEL, Marker Rod	2	2
27		COTTER PIN, 3/16 x 1-1/2 - Swivel Retaining	2	2
28	126016	STRAP, Keeper, Swivel	2	2
29	126017	SPACER, Pipe, 3/8 x 1-9/16	4	4
30		BOLT, 7/16 - 1 1/4 x 2-3/4 Hex Hd)		
31		LOCKWASHER, 7/16) Strap to Swivel to	4	4
32		NUT, 7/16 - 1 1/4 Hex) Spacer to Bar		

Planter

FIG. 26	PART NO.	NAME AND DESCRIPTION	QTY. REQ.	
		GROUP 5-1 SEMI-AUTOMATIC DISC MARKER ASSEMBLY (Model 12-65, 92) (Cont'd) <u>* SEMI-AUTOMATIC HOOK MARKER ASSEMBLY (Model 12-72, 93)</u>	12-65,92	12-72,93
33	128017	ARCH, Marker Pulley	1	1
34	127997	BRACE, Marker Arch	2	2
35		BOLT, 7/16 - 1 1/4 x 1-1/4 Hex Hd)		
--		LOCKWASHER, 7/16) Brace to Arch	2	2
--		NUT, 7/16 - 1 1/4 Hex)		
36	126013	PULLEY ASSEMBLY, w/Sheave and Eyebolt	1	1
37		BOLT, 7/16 - 1 1/4 x 1-3/4 Hex Hd)	1	1
--		WASHER, 7/16 Flat)	2	2
--		LOCKWASHER, 7/16)	1	1
--		NUT, 7/16 - 1 1/4 Hex)	1	1
--	128261	HOOK, Marker Lift	2	2
--	128262	PULLEY, Marker Lift	1	1
		* NOTE: The Semi-Automatic Hook Markers are Standard Equip- ment on the Dearborn Check Row Corn Planter Model 12-87.		

Planter

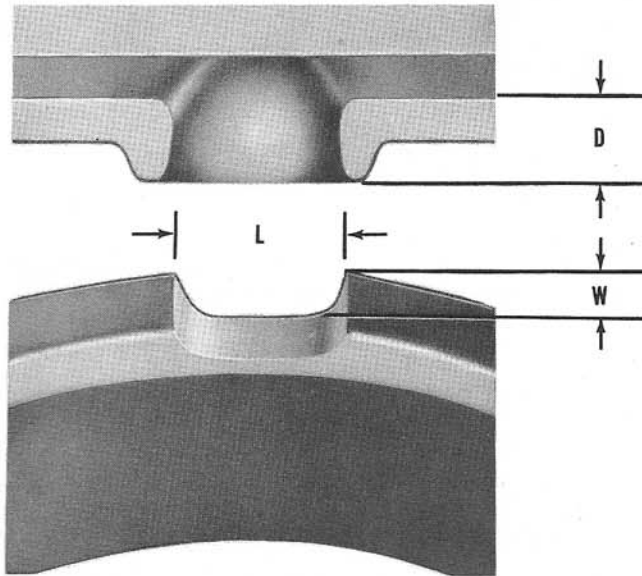


Figure 27 - Seed Plate Dimensions

SEED PLATE REFERENCE LIST

Part No.	Description	Cells	L	W	D
126056	Large Flat Corn	8	3/4	3/16	1/4
126057	Large Flat Corn	12	3/4	3/16	1/4
126058	Large Flat Corn	16	3/4	3/16	1/4
126062	Medium Flat Corn	8	11/16	3/16	9/32
126063	Medium Flat Corn	12	11/16	3/16	9/32
126064	Medium Flat Corn	16	11/16	3/16	9/32
126070	Small Flat Corn	8			
126071	Small Flat Corn	10			
126072	Small Flat Corn	12			
126073	Small Flat Corn	16			
126076	Extra Small Flat Corn	8	1/2	3/16	9/32
126077	Extra Small Flat Corn	12	1/2	3/16	9/32
126078	Extra Small Flat Corn	16	1/2	3/16	9/32
126080	Pop Corn	8	3/8	3/16	9/32
126081	Kaffir Corn, Cane, Sugar Beets	9	1/4	1/8	5/16
126082	Kaffir Corn, Cane, Sugar Beets	18	1/4	1/8	5/16
126084	Lima Beans, Ensilage Corn	8	25/32	9/32	1/4
126085	Lima Beans, Ensilage Corn	16	25/32	9/32	1/4
126086	Kidney Beans, Soy Beans	24	21/32	1/4	9/32
126087	Pink Beans, Peas	26	1/2	3/16	9/32
126089	Peas, Some Round Corn	9	17/32	9/32	1/4
126090	Peas	18	17/32	9/32	1/4
126092	Small Flat Corn	8	19/32	3/16	1/4
126093	Small Flat Corn	12	19/32	3/16	1/4
126094	Small to Medium Regular & F1 Corn	12	5/8	3/16	9/32
126095*	Atlas Saro, Milo Cane, Broom Corn	12	7/32	7/32	
126096*	Blank Plate				
129686	Bottom Plate for 126095, 96, 103, 104, 105, 106, 107, 108				
126099	Medium Flat Corn	10	5/8	3/16	1/4
	* Use w/126097 Bottom Plate				

Planter

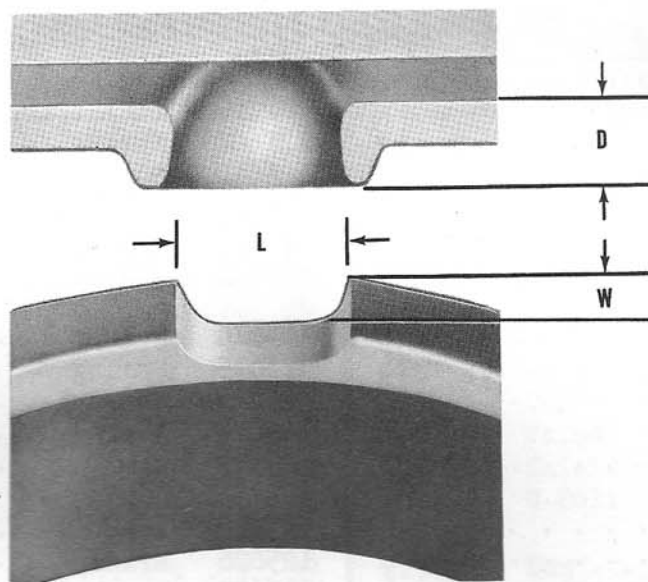


Figure 27 - Seed Plate Dimensions

SEED PLATE REFERENCE LIST

Part No.	Description	Cells	L	W	D
126100	Soy Beans, Large Flat Corn	12	21/32	7/32	1/4
126101	Blank Plate				
126102	Large Bayo Beans	24	21/32	5/16	9/32
126103*	Soy Beans	30	11/32	7/32	7/32
126104*	Navy Beans & Small Round Corn	8	7/16	7/32	7/32
126105*	Navy Beans & Small Round Corn	12	7/16	7/32	7/32
126106*	Navy Beans	18	7/16	7/32	7/32
126107*	Navy Beans	36	7/16	7/32	7/32
126108*	Pea Beans	36	5/16	5/32	3/16
126109	Extra Small Round Corn	8	7/16	3/16	1/4
126110	Extra Small Round Corn	12	7/16	3/16	1/4
126111	Extra Small Round Corn	16	7/16	3/16	1/4
126114	Small Round Corn	8	17/32	7/32	9/32
126115	Small Round Corn	12	17/32	7/32	9/32
126116	Small Round Corn	16	17/32	7/32	9/32
126117	Medium Round Corn	8	17/32	1/4	1/4
126118	Medium Round Corn	12	17/32	1/4	1/4
126119	Medium Round Corn	16	17/32	1/4	1/4
126121	Medium Small Round Corn	8	17/32	5/32	1/4
126122	Medium Small Round Corn	12	17/32	5/32	1/4
126123	Medium Small Round Corn	16	17/32	5/32	1/4
126124	Soy Beans (Heavy Planting)	24	23/32	5/16	3/8
126125	Large Round Corn, Beans	8	9/16	1/4	1/4
126126	Large Round Corn, Beans	12	9/16	1/4	1/4
126127	Extra Small to Small Flat Corn	12	17/32	5/32	9/32
126128	Extra Small to Small Flat Corn	16	17/32	5/32	9/32
126129	Extra Small Corn, Pop Corn	8	3/8	9/64	9/32

* Use w/126097 Bottom Plate

NUMERICAL INDEX

PART NO.	PART NAME	PAGE NO.	PART NO.	PART NAME	PAGE NO.
87901-S	Fitting	43	125606	Spring	9,17,19
103497	Pin	7	125610	Shaft	9
104306	Eyebolt	41	125611	Housing	9
121111	Bracket	10,14	125612	Clutch	9
121112	"U" Bolt	10,14	125613	Dog	9,13
121117	Sprocket	14	125614	Holder	9
121118	Cam	14	125615	Spring	4,9
121119	Bracket	43	125616	Support	9
121563	Band Assy	27	125618	Shaft	9,14
125466	Bearing	35	125619	Arm	10,15
125554	Bar	4	125620	Arm	10,15
125557	Bar	4	125626	Brace	23
125558	Drawbar	4	125627	Bracket	23
125559	Roller	4	125629	Dog	29
125560	Upright	4	125630	Sheave	29
125561	Brace	4	125632	Sprocket	25
125562	Brace	4	125633	Bracket	25
125564	Rod	10,15	125634	Shaft	25
125565	Brace	17	125635	Brace	5
125573	Valve	17	125637	Bracket	9
125566	Brace	17	125639	Roller	25,29,33
125574	Valve	17	125641	Wheel	23
125575	Pin	17	125642	Sprocket	27
125576	Valve	17	125643	Seat	23
125577	Pin	17	125644	Sprocket	27
125579	Socket	10,15	125645	Anchor	33
125580	Stud	10,15,17	125646	Frame	23
125582	Spout	17	125648	Washer	24,27
125586	Arbor	17	125651	Bracket	23
125587	Thimble	17	125652	Bracket	23
125589	Bolt	17	125653	Anchor	23
125591	Pin	15,17	125654	Anchor	23
125592	Strap	17	125655	Scraper	24
125594	Fork	19	125656	Cap	24
125595	Fork	19	125657	Spring	23
125596	Hinge	19	125658	Spring	25,30
125597	Arm	19	125659	Spacer	24
125601	Dump	19	125660	Rod	24,29
125602	Roller	19	125661	Screw	29
125603	Roller	19	125662	Bracket	29

NUMERICAL INDEX (Cont'd)

PART NO.	PART NAME	PAGE NO.	PART NO.	PART NAME	PAGE NO.
125665	Collar	30	125727	Spring	21
125667	Arm	29	125728	Spring	21
125668	Sprocket	29	125729	Ring	21
125670	Spindle	29	125731	Wheel	27
125671	Bracket	29	125732	Sprocket	27
125672	Spring	29	125734	Wheel	41
125674	Bracket	32	125738	Cap	41
125680	Plate	32	125739	Washer	41
125682	Strap	32	125740	Shield	41
125683	Strap	32	125741	U-Bolt	41
125684	Shaft	33	125742	Box	41
125685	Shaft	33	125745	Stake	30
125686	Gear	33,35	125749	Bracket	30
125687	Sprocket	33,35	125750	Eyebolt	30
125689	Arm	33	125751	Spring	30
125691	Link	39	125754	Reel Assy	30
125692	Link	39	125783	Index	37
125694	Cap	39	125784	Ring Assy	37
125695	Spout	18	125785	Gauge	37
125697	Bracket	27	125788	Agitator	37
125699	Rod	45	125789	Housing	37
125700	Arm	39	125792	Bottom	37
125701	Divider	39	125793	Bracket	37
125702	Valve	39	125794	Strap	37
125703	Valve	39	125795	Strap	37
125704	Shoe	39	125796	Strap	37
125705	Shoe	39	125797	Scraper	37
125706	U-Bolt	39	125798	Lever	37
125707	Shutter	39	125799	Spring	37
125708	Plate	5	125802	Cover	37
125713	Rivet	21,37	125804	Spout	33
125714	Latch	21,37	125805	Spout	33
125716	Cover	21	125806	Tube	33
125717	Spring	21,37	125809	Disc	40
125718	Hinge	21	125810	Standard	40
125722	Cut-Off	21	125813	Washer	40
125723	Washer	21	125814	Washer	40
125724	Disc	21	125815	Clamp Assy	40
125725	Knocker	21	125817	Spacer	5,7
125726	Latch	21	125824	Spacer	29

Planter

NUMERICAL INDEX (Cont'd)

PART NO.	PART NAME	PAGE NO.	PART NO.	PART NAME	PAGE NO.
125825	Spacer	25,29,33	125928	Plate	41
125826	Spacer	25,29,33	125934	Hopper & Cover Assy	21
125828	Spacer	29	125963	Washer	13
125833	Cap	4	125965	Bottom	21
125835	Eyebolt	10,14	126000	Rod	45
125836	Spring	14,33,39	126004	Marker	45
125837	Clip	10,14	126005	Marker	45
125841	Washer	17	126013	Pulley Assy	46
125842	Washer	9,13,14	126015	Swivel	45
125844	Rivet	14,23	126016	Strap	45
125846	Seat	29	126017	Spacer	45
125849	Washer	29	126018	Rod	45
125850	Support	33	126019	Clamp	45
125851	Support	33	126020	Collar	45
125852	Rivet	39	126021	Strap	45
125853	Spacer	39	126028	Clamp	21
125854	Spacer	39	126063	Plate	21
125855	Rivet	21	126130	Hinge	4
125857	Spacer	24,29	126138	Bracket	32,35
125864	Spacer	9	126177	Hopper Assy	37
125868	Axle	41	127976	Bracket	7
125869	Bushing	40	127977	Bearing	14
125871	Bolt	23	127980	Hitch	6
125873	Sprocket	14	127983	Hitch	6
125876	Support Assy	42	127984	Brace	7
125880	Support Assy	42	127986	Shaft	45
125883	Disc	42	127988	Rod	45
125885	Hub	42	127994	Arm	25
125886	Hub	42	127997	Brace	46
125887	Cap	42	127997	Brace	46
125888	Bushing	42	127998	Bracket	29
125889	Washer	42	127999	Anchor	23
125891	Baffle	39	128001	Sprocket	35
125907	Disc & Hub Assy	45	128003	Brace	18
125909	Hub	45	128004	Brace	23
125910	Collar	45	128007	Spreader	7
125916	Hook Assy	5	128011	Axle	27
125919	Spring	5	128013	Plate	27
125920	Clip	5	128015	Rod	45
125926	Block	41	128016	Bar	23

Planter

NUMERICAL INDEX (Cont'd)

PART NO.	PART NAME	PAGE NO.	PART NO.	PART NAME	PAGE NO.
128017	Arch	46	128161	Brace	23
128018	Point	45	128162	Spacer	7
128021	Wheel	27	128163	Clip	29
128022	Opener	17	128164	Bracket	14
128024	Upright	7	128166	Bearing	13
128025	Bar	6	128199	Latch	19
128026	Bar	6	128204	Arm	10, 14
128027	Bar	6	128260	Bracket	43
128028	Bar	6	128261	Hook	46
128031	Brace	18	128262	Pulley	46
128034	Shaft	35	128296	Pin	30
128035	Washer	25	128302	Spacer	10, 14
128039	Shaft	30	128454	Sprocket	29
128048	Brace	7	128491	Support	17
128050	Cover	13	128504	Arm	9, 14
128051	Ratchet	13	128505	Housing	13
128053	Pawl	13	128671	Eye Bolt	17
128056	Shaft	13	128680	Gear	17
128064	Tube	35	128688	Plate	17
128065	Retainer	13	128692	Cap	21
128066	Agitator	37	129176	Hopper Assy	21
128069	Lever	13	129214	Shoe	18
128070	Clip	7	129232	Gear	9, 14
128071	Pin	13	129543	Cover	37
128073	Shaft	13	129612	Nut	17, 18
128074	Quadrant	13	132934	Cap	43
128075	Pin	13	132935	Spindle	43
128081	Lever	13	132936	Bearing	43
128082	Holder	13	132937	Hub	43
128083	Shank	17	132938	Disc	43, 45
128085	Brace	7	132940	Bearing	43
128087	Sprock	35	132941	Bracket	43
128088	Shaft	14	164100	Chain	25
128089	Support	13	164101	Chain	29, 33, 35
128090	Can	13	302323-58	Bolt	43
128091	Spring	19	302345	Bolt	43
128093	Head	19			
128094	Head	19			
128153	Frame	23			
128159	Bar	35			